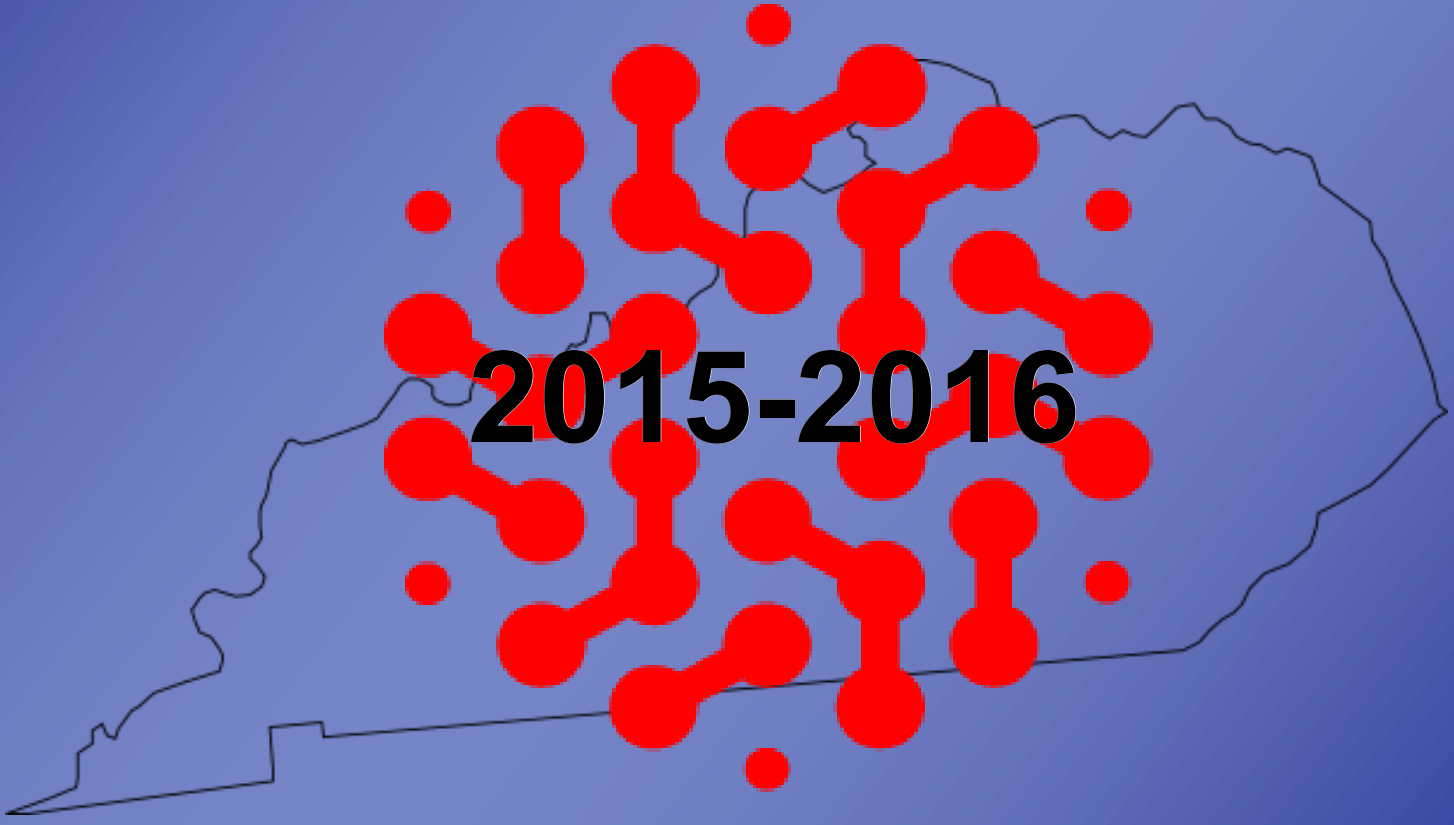


Health**Enterprises**Network

A Greater Louisville Inc. Affiliate

GUIDE TO HEALTH-RELATED BUSINESSES



2015-2016



2015-2016

Guide to Health-Related Businesses

A Publication of



HealthEnterprisesNetwork
A Greater Louisville Inc. Affiliate

Michael P. Muldoon MPH
Executive Director

David Buschman
Business Development Director

Piper Clark
Communications Manager

Ginny Washbush
Program Manager

* For more information about the Health Enterprises Network please contact us more at:

Info@HealthEnterprisesNetwork.com
www.HealthEnterprisesNetwork.com

* Like us - <http://www.facebook.com/HealthEnterprisesNetwork>

* Tweet with us - <http://www.twitter.com/HealthENetwork>

* Join our LinkedIn group – search for HEN – Health Enterprises Network

Table of Contents

4	The Health-related Economy: An Overview Going Statewide Kentucky Healthcare Happenings Here We Grow: Expansion and Growth All for one, and one for all: Alliances and Partnerships Logistically Speaking: Healthcare Logistics Taking the Temperature on Wellness: Wellness Efforts
8	Summary of the Health Enterprises Network Overview Network events Publications
10	Leadership 2015 Executive Committee 2015 Board of Directors
12	Member Companies Intensive PLUS Intensive Primary PLUS Primary Base
14	Louisville Healthcare Fellows Program Overview
16	The Guide Criteria for Inclusion How the Guide is Organized Industry Sector Definitions

An Overview

Going Statewide

Just a few short years ago, the Health Enterprises Network (HEN) cast its net of service to include Lexington, Kentucky area. The move bumped the number of counties in the HEN service area to 27 and strengthened a growing regionalism between the two largest cities in the Commonwealth. Now once again, in an effort to connect thought leadership throughout the state, the Health Enterprises Network is broadening its range with coverage of the entire state of Kentucky.



This latest move is one that was undertaken with thoughtful consideration and strategic planning by the network's executive committee and larger board of directors. Not only will coverage of the state afford organizations throughout the Commonwealth access to cutting-edge events, innovative business development opportunities and strategic leadership opportunities, but it will allow the network to continue to flourish and grow.

Kentucky Healthcare Happenings

Over the past year, the Commonwealth of Kentucky has seen many significant activities and trends in the healthcare industry. One only need look as far as the headlines to notice that many of these activities fell under the categories of expansion and growth; acquisitions and mergers; alliances and partnerships; healthcare logistics; and wellness efforts. The following provides a sample of activities that occurred in each of these categories. Please note, that this is only a snapshot and is by no means inclusive of the abundant activity, nor the categories of activity, in the healthcare sector.

Here We Grow: Expansion and Growth

When we talk about growth, it's a very inclusive discussion. From the physical expansion of an organization's space to the acquisition of one company by another, growth can come in many forms. During the past several months, many of our HEN investor companies have experienced strong growth and expansion.

Since 2010, **Humana** has made eight acquisitions. Acquisitions have included Concentra Inc.; Antiva Health; MD Care; Arcadian Management Services; SeniorBridge; Certify Data Systems; Metropolitan Health Networks Inc. and American Eldercare Inc.

In early October, **Kindred Healthcare** announced that it will acquire Atlanta-based Gentiva Health Services Inc. The transaction is valued at \$1.8 billion and is expected to close during the first quarter 2015. Gentiva, like Kindred, operates in the post-acute-care sector. In November 2014, Kindred announced a definitive agreement to acquire Centerre Healthcare, a national company dedicated to operating inpatient rehabilitation hospitals. With this acquisition, Kindred will establish a focused growth platform, and business line, to be known as Kindred Hospital Rehabilitation Services. Kindred will operate in 36 states in 384 locations creating one of the nation's largest networks of inpatient rehabilitation hospitals.

Norton Healthcare has experienced growth with the expansion and renovation of its Norton Suburban Hospital. In August, Norton opened up new pediatric inpatient and pediatric emergency services units at the Norton Suburban Hospital and added three stories on top of what now is the hospital's emergency department. The extension created an additional 100,000 square feet. At Norton's recently-opened Orthopedic and Hand Center at Old Brownsboro Crossing, many services have been expanded including orthopedics, OB/GYN and pediatric services, among others.

Signature HealthCARE acquired 10 nursing center operations in Georgia, North Carolina, Ohio and Virginia. The transactions added up to 1,200 employees and Signature plans to invest almost \$1 million in renovations. Earlier in the year, the company purchased ConfiCare Home Health Solutions, a Florida-based company, and 200 employees were brought on board with the acquisition.

Baptist Health added MaxCare Urgent Treatment Center, a Shelbyville-based facility, to its family of services further strengthening the hospital's scope of care in the Shelby County area. MaxCare services more than 17,000 patients each year.



After a five-year effort, **Hosparus** began wrapping up its \$7.5 million capital campaign. The money will go to expand Hosparus's pediatric program, called Kourageous Kids. The program, which has nearly doubled in the past five years, served approximately 70 seriously ill children in the past year.

Since December 2013, **Almost Family** has made two acquisitions. The first purchase was for Madison, Tennessee based SunCrest Healthcare and cost Almost Family \$75.5 million. The second occurred in March when Almost Family entered an agreement to acquire the assets of the Medicare-certified home health unit of Caldwell Medical Center in Princeton, Kentucky.

All for one, and one for all: Alliances and Partnerships

Among the network's investors, partnerships have been the name of the game. In response to pressures brought on by the Affordable Care Act, **Norton** and **Baptist** kicked off the year with a five-year purchasing partnership. The partnership is intended to reduce costs of medical and surgical supplies, devices and implants. Prior to the partnership both Norton and Baptist spent approximately \$85 million annually on items and services. Over the life of the five-year contract, savings estimates for the two hospital systems top \$15 million. Other partnerships were seen throughout the Commonwealth, including:

Signature HealthCARE joined with **KentuckyOne Health** to establish a 20-bed skilled-nursing unit at Sts. Mary and Elizabeth Hospital, a KentuckyOne facility. The partnership allows for Signature to lease a 12,000 square-foot area so that they will be able to set up a skilled-nursing unit and ease the transition between short-term hospital stays and going home.

InnovateLTC partnered with California-based **WalkJoy** to test its gait therapy and diagnostic walking devices and to help bring the up-and-coming company to the marketplace. With the partnership, InnovateLTC facilitated placement of WalkJoy's gait therapies and walking diagnostics into ten nursing facilities in seven states. The nursing facilities are operated by **Signature HealthCARE** and **Nazareth Home**.

In July 2014, **Baptist** and **Norton** joined up again – this time on pharmaceutical distribution services - with a five-year agreement with Cardinal Health.

Logistically Speaking: Healthcare Logistics

Healthcare logistics is huge in our region and continues to grow with **UPS's Worldport** at the forefront. As UPS's largest air sorting hub, Worldport is enormous, measuring 90 football fields with 155 miles of conveyor belts processing 416,000 packages per hour at peak capacity.

UPS Global Logistics and Distribution added a fourth facility for a dedicated Louisville Healthcare Logistics Campus which now totals 1.3 million square feet.

Louisville International Airport opened its Taxiway Alpha this year, a \$46.6 million project which allows **UPS** to land its largest ever cargo planes in Louisville. The runway, which measures nearly two miles in length and 100 feet in width, can handle massive jetliners carrying up to one million pounds of cargo.

Taking the Temperature on Wellness: Wellness Efforts

Whether it be employees or patients, getting and staying healthy is always important to waistlines and bottom lines. The last year has seen healthy portions of wellness efforts for our area with one of the major ones occurring at the **University of Kentucky**. In September 2014, the University of Kentucky received a \$1.8 million cooperative agreement with the U.S. Department of Health and Human Services. The funding was provided for a three-year period to aid in lowering obesity rates in six Kentucky counties: Clinton, Elliott, Letcher, Lewis, Logan and Martin. Each of these county's obesity rate exceeded 40 percent.

In May 2014, **KentuckyOne** opened the first of three proposed healthy-lifestyle centers. The healthy-lifestyle centers aim to offer medically supervised fitness programs, nutrition counseling and stress management among other services to KentuckyOne's patients. In November 2014, KentuckyOne also captured Business First's Healthiest Employers of Greater Louisville award (among the 50,000+ employees category). For four straight years, KentuckyOne has received the honor, with this year's award highlighting the company's \$200 discount on insurance premiums and discounts on Fitbit devices for employees.

HumanaVitality released an app that will fully integrate with Apple's HealthKit app. The new app makes it easier than ever for Humana members to manage fitness and nutrition data. As members use the app, they are able to earn points which in turn can be redeemed for products at the HumanaVitality Mall.

Norton Healthcare was awarded Business First's Healthiest Employer for companies with 5,000 to 49,999 employees. Norton offers those who participate in their wellness programs monetary rewards.





Health-Related Companies Making the List of the Top 30 Louisville Employers (ranked by number of local employees)

Employer	Service	Total Employees
United Parcel Service, Inc.	Logistics/distribution (healthcare logistics).....	20,931
Humana, Inc.....	Health and well-being, medical, pharmaceuticals.....	12,371
Norton Healthcare Inc.....	Healthcare provider.....	10,245
KentuckyOne Health Inc.	Healthcare provider.....	5,602
Baptist Health.....	Healthcare provider.....	5,339
Kindred Healthcare Inc.....	Healthcare provider.....	2,249
Floyd Memorial Hospital & Health Services	Healthcare provider.....	1,769
Clark Memorial Hospital.....	Healthcare provider.....	1,241
Anthem Blue Cross and Blue Shield.	Health insurance, dental, vision, life, etc.....	1,139
Seven Counties Services Inc.....	Mental health services.....	1,129
ResCare Inc.....	Supports people with development & other disabilities.....	1,054
Sullivan University System Inc.....	Education.....	939

Source: *Business First, Book of Lists 2014*

Summary of Health Enterprises Network

Overview

Health Enterprises Network (HEN), a healthcare business network, provides leadership, education and business development opportunities to health and health-related organizations in Kentucky. HEN represents over 200 healthcare organizations and 1,300-plus individuals throughout the state. Yearly, HEN presents 30+ programs on the health-related issues that keep healthcare leaders awake at night. HEN's purpose-driven networking events provides access to key healthcare leaders and decision makers .

Network Events

- * Over 30 events held — some with over 250 in attendance. Others designed as smaller, niche events with 30 to 100 in attendance.

- * **Five signature events included:**

"Family Tree of Health-Related Companies," 6th edition, Unveiling, March

- **Focus:** This updated edition now includes all Investor companies of the network regardless of whether or not they were founded in the Louisville area.
- **Speakers:** Senator Julie Denton, District 36 KY State Senator; Deputy Secretary Eric Friedlander, Kentucky Cabinet for Health and Family Services; Rick Remmers, VP/national practice leader - group distribution and market operations, Humana; and Joe Steier, chief executive officer, Signature HealthCARE and board chair, Health Enterprises Network
- **Location:** The Nucleus, 300 E. Market Street, Louisville, Ky. 40202
- **Time:** 10 a.m. (arrival, networking), 10:45-11:45 a.m. (unveiling ceremony, speakers)

Summer Social, June

- **Focus:** A complimentary event from Health Enterprises Network to say thank you and express appreciation for investors, committee members, speakers, employees, etc.
- **Location:** Luckett & Farley, 737 S. 3rd Street, Louisville, Ky. 40202
- **Time:** 5:30-7 p.m.

Population Health, September

- **Focus:** Health Enterprises Network addressed the "paradigm-shifting" and "career-changing" issues within healthcare. Topic presentations included advancing personal health data, promoting wellness through systems and policy changes and improving population through health collaborative works, with a special emphasis on aging and the continuum of care.
- **Speakers:** John Reinhart, CPA, MBA, co-founder and CEO of InnovateLTC; Judah Thornewill, founder and CEO of GroupPlus, LLC; Sarah Walsh, PhD, MPH, Assistant Professor of Health Administration at Eastern Michigan University; William Yasnoff MD, PhD, Managing Partner, National Health Information Infrastructure Advisors
- **Moderator:** Jean West, Anchor, WAVE 3
- **Location:** Kosair Charities Center for Translational and Research Building, 505 S. Hancock Street, Louisville, Ky. 40202
- **Time:** 5:30-7:45 p.m. (program, Q&A, book signing)

Inside Washington, November

- **Focus:** Gave "lay of the land" insight post November 4th midterm elections from two highly visible frontline lobbyists.
- **Speakers:** John Williams III, attorney at Hall Render and former press secretary for the House Committee and senior communications staff committee member during the impeachment proceedings of President Bill Clinton and Andrew Coats, Of Counsel, Federal Legislative and Regulatory Advocacy at Hall Render
- **Location:** Foundation for a Healthy Kentucky, 1640 Lyndon Farm Court, Ste. 100, Louisville, Ky. 40223
- **Time:** 8:30-9:15 a.m. (arrival, registration, networking), 9:15-10:30 a.m. (presentation, Q&A)

Holiday Reception, December

- **Focus:** Celebrated our network, its members, the board, executive committee, other HEN committees and the accomplishments of the past year. Sponsored by Kindred Healthcare, Anthem BlueCross BlueShield, and KentuckyONE Health
- **Time:** 5:30-7:30 p.m.

*** Healthcare Spotlight Series—Sponsored by Norton Healthcare, the Healthcare Spotlight Series hosted four sessions in 2014**

Value: Purchasers, Population Health Management + Quality of Care + Informatics = Value, April

- **Focus:** An introduction to a discussion series not only for the healthcare executive, but for the entire business community on...quality, cost, technology, the disarray in healthcare, empowerment, disruptive management, innovation...but most importantly, “value.”
- **Speakers:** John Langefeld MD, chief medical officer, KY Cabinet for Health & Family Services, Department for Medicaid Services and Phillip Polakoff MD, MPH, MEnvSc, senior managing director and chief medical executive, Health Solutions Practice, FTI Consulting
- **Moderator:** Eric Schmitz, field vice president KY, Humana
- **Location:** Signature HealthCARE, 12201 Bluegrass Parkway, Louisville, Ky. 40299
- **Time:** 7:30-8 a.m. (Registration, Networking, Breakfast), 8 - 10 a.m. (Program, Q&A)

TeleHealth: Telemedicine? E-health? What's the connection? What's the value? May

- **Focus:** Named as the top health trend for 2014 by Forbes, telehealth is lauded by its advocates as one way to significantly reduce medical costs. This session discussed the value proposition from Federal, State and frontline technical application.



- **Speakers:** Tom Morris MPA, associate administrator for rural health policy, Health Resources and Services Administration, US Department of Health and Human Services; Eve Phillips MBA, CEO and co-founder, Empower Interactive; Rob Sprang MBA, director, Kentucky TeleCare, University of Kentucky, UK Healthcare, co-project manager, Kentucky Telehealth Network
- **Moderator:** John Jennings MBA, assistant VP of Midwest operations and chief technology officer, Trinity Video Communications
- **Location:** Harshaw Trane, 12700 Plantside Drive, Louisville, Ky. 40299
- **Time:** 7:30-8 a.m. (Registration, Networking, Breakfast), 8 - 10 a.m. (Program, Q&A)

Big Data: What's the Big Deal? July

- **Focus:** A look at how data impacts healthcare and how you can leverage big data for your organization's success.
- **Speakers:** Sachin Agrawal, managing director, provider practice, IMS Health; Drew Goddin, managing director, health practice solutions practice, FTI Consulting, Inc.; Patrick Stach, group manager, provider practice, IMS Health
- **Moderator:** Jeff Biggs, executive VP, technology and operations, Peak 10
- **Location:** Norton Medical Plaza II Center, Orthopedic & Hand, 9880 Angies Way, Louisville, Ky. 40241
- **Time:** 7:30-8 a.m. (Registration, Networking, Breakfast), 8 -10:30 a.m. (Program, Q&A)

Sg2 Speaks, December

- **Focus:** Concentrated on “what the employer wants” and focused, in a very detailed way, on benefit design, value-based purchasing, consumerism, and retail health.
- **Speakers:** Jeffrey Moser, Vice President, Sg2
- **Moderator:** Jeffrey Bringardner, Regional Vice President, Humana Kentucky/Ohio, Humana Inc.
- **Location:** Norton Medical Plaza II Center, Orthopedic & Hand, 9880 Angies Way, Louisville, Ky, 40241
- **Time:** 5:30-6:15 p.m. (Arrival, Registration, Networking), 6:15-7:45 p.m. (Presentation)

HEALTH ENTERPRISES NETWORK

2015 Officers and Members of the Executive Committee

Chair

Joe Steier EdD, MBA, CPA, President, Signature HealthCARE

Immediate Past Chair

Ralph Gronefeld CPA, President & CEO, ResCare

Vice Chair, Knowledge Networking

Phil Marshall, Preseident & CEO, Hosparus – The Community Hospices of Louisville, Southern Indiana & Central Kentucky

Vice Chair, Business Development & Marketing

Janet Lively, Director of Marketing & Business Development, Sustainable Energy Solutions

Vice Chair, Health Policy Forum

Thomas Hoy JD, Partner, Dinsmore & Shohl, LLP

Vice Chair, Finance

Nick Walker, Assurance Partner, PricewaterhouseCoopers LLP

Chair, Nominating Committee

Vickie Yates Brown JD, President, NUCLEUS and Co-Chair Health Law Practice Group, Frost Brown Todd LLC

Executive Committee Member

Mary Jo Bean, Vice President, Planning and Business Analysis, North Healthcare

Executive Committee Member

Kathie McDonald- McClure JD, Partner, Wyatt, Tarrant & Combs, LLP

Executive Committee Member

Jim Rives, Partner, Rives Development Associates

Executive Committee Member

Rene Savarise JD, Shareholder, Hall Render Killian Heath & Lyman, PSC

Executive Committee Member

Richard Shaver, Director of Operations Global Logistics & Distribution, UPS

Executive Committee Member

Mark R. Wiegand PhD, Professor and Dean, Lansing School of Nursing & Health Sciences, Bellarmine University

Executive Committee Member (*ex-officio*)

Kent Oyler, President & CEO, Greater Louisville Inc.

HEALTH ENTERPRISES NETWORK

2015 Members of the Board of Directors

Greg Aaron, Enterprise Account Executive, Cisco Systems

Joseph Ardery JD, Member, Frost Brown Todd LLC

Mary Jo Bean, VP, Planning and Business Analysis, Norton Healthcare

George Bell, President & CEO, Office Resources Inc.

Joanne M. Berryman, Ed.D, Dean and Professor, Spalding University

Benjamin A. Breier, President & Chief Operating Officer, Kindred Healthcare

Vickie Yates Brown JD, President, NUCLEUS

Mark Carter, CEO, Passport Health Plan

Gregory A. DeMuth, VP/Market Manager, Republic Bank & Trust Company

David Dunn MD, Executive Vice President, Health Affairs, University of Louisville, (ex-officio)

Marshall Fall, Jr, National Business Development Executive, Aspect, Inc.

Mayor Greg Fischer, Mayor, Louisville Metro Government (ex-officio)*

Daniel Fisher JD, Bingham Greenebaum Doll LLP

Jan Gordon, Executive Director, Spencerian College

Laman Gray MD, Professor of Surgery, University Cardiothoracic Surgical Associates

Ralph Gronefeld CPA, President & CEO, ResCare

Thomas J. Hammer AIA, Partner, Market Healthcare Sector Leader & Senior Project Manager, Luckett & Farley

Janet Lively, Director of Marketing & Business Development, Sustainable Energy Solutions

Thomas Hoy JD, Partner, Dinsmore & Shohl, LLP

Joe Kelley, President & CEO, Kelley Construction

Joe Kutz MD, Partner, Kleinert Kutz Hand Care Center

Jim Lacy JD, COO & Chief Counsel, ZirMed

Ed G. Lane, Publisher, Lane Communications Group

Mike Lorch, VP of Provider Engagement and Contracting, Anthem Blue Cross and Blue Shield

Angie Mannino, Chief People and Culture Officer, Baptist Health

Phil Marshall, President & CEO, Hosparus - The Community Hospices of Louisville, Southern Indiana & Central Kentucky

Dave Martin, Senior Manager, Peak10 Data Center and Cloud Solutions

Kathie McDonald-McClure JD, Partner, Wyatt, Tarrant & Combs, LLP

Mary E. McKinley CPA, Partner, BKD, LLP

Shelley Neal Shaughnessy, Vice President, Ambulatory Services, KentuckyOne Health

Tony Newberry PhD, President, Jefferson Community & Technical College

Kent Oyler, President & CEO, Greater Louisville Inc.

Norman Radtke MD, Founder, Retina Vitreous Resource Center

John Reinhart, Founder and CEO of the International Center for Long Term Care Innovation (InnovateLTC)

Rick Remmers, VP/National Practice Leader, Commercial Large Group, Humana Inc.

David W. Richard CPA, Director of Assurance Services, Dean Dorton Allen Ford

Jim Rives, Partner, Rives Development Associates

Christopher Roszman CPA, CFO, Seven Counties Services

John B. Roth MD, Kaplan Barron Pediatric Group

Rene Savarise JD, Shareholder, Hall Render Killian Heath & Lyman, PSC

Richard Shaver, Director of Operations Global Logistics & Distribution, UPS

E. Joseph Steier III EdD, President/CEO, Signature HealthCARE

Neal Thomas, Senior Manager, Ernst + Young

Mark A. Vogt, President, Galen College of Nursing

Nick Walker, Assurance Partner, PricewaterhouseCoopers LLP

Mark R. Wiegand, PhD, Professor and Dean, Lansing School of Nursing & Health Sciences, Bellarmine University

Bill Yarmuth, Chairman CEO & President, Almost Family

Anthony Zipple ScD, President/CEO, Seven Counties Services

* Ted Smith PhD, Chief of Civic Innovation, Louisville Metro Government, will represent the Mayor's Office

Member Companies as of June 2, 2014

Intensive

Amgen Inc.	Mody Medical Enterprises
Anthem Blue Cross and Blue Shield of Kentucky	Norton Healthcare
Baptist Health	NUCLEUS
Bellarmino University	PricewaterhouseCoopers LLP (PwC)
Ernst & Young (E&Y)	ResCare, Inc.
Greater Louisville Inc.	Signature HealthCARE
Gyroskope	Spencerian College
Hall Render Killian Heath & Lyman, PSC	University of Louisville
Humana Inc.	Wyatt, Tarrant & Combs, LLP
Institute for the Future	



Primary

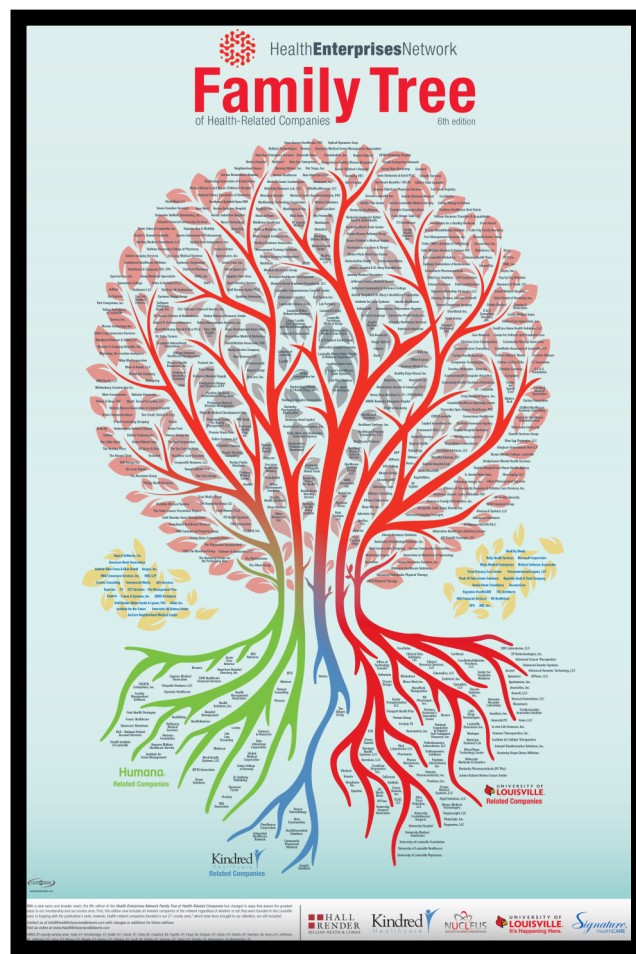
Almost Family	ID&A, Inc.	Spalding University
Aspect	Jefferson Community & Technical College	Stites & Harbison PLLC
BB&T Insurance Services	JenCare Neighborhood Medical Centers	Stoll Keenon Ogden
Bingham Greenebaum Doll PLLC	Kelley Construction	Sullivan College of Pharmacy
BKD, LLP	Kleinert Kutz Hand Care Center	Superior Van & Mobility
Christian Care Communities	L&D Mail Masters	TEG
Chrysalis Ventures, LLC	Luckett & Farley Architects	The Lane Report
Cisco	Magnolia Springs- Conficare	The Healing Place
Dean Dorton Allen Ford LLC (Dean Dorton)	Medical News	The Muldoon Group
Deloitte	Mountjoy Chilton Medley	The Oliver Group
Dinsmore & Shohl, LLC	Myliance	Trilogy Health Services
Dressman Benzinger LaVelle	Office Resources, Inc.	Trover Solutions
Firstsource	Paige Primary Care Center	University of Louisville Physicians
Foundation for Healthy Kentucky	Parallon- National Patient Account Services	UPS
Frost Brown Todd LLC	Passport Health Plans	World Trade Center of Kentucky
Galen College of Nursing	Peak 10 Data Center Solutions	Yellow Ambulance of Louisville
GBBN Architects	Republic Bank & Trust Company	ZirMed
HIMSS—Health Information Management Systems	RDA- Rives Development	
Hosparus- The Community Hospices of Louisville, Southern Indiana & Central Kentucky	Seven Counties Services	

Intensive PLUS

Kindred Healthcare

Primary PLUS

KentuckyONE Health



Base

AgeTransitions

Alternative Health Care Adult Day Center

American Heart Association

AM Warner Insurance

Centric Consulting

Click I.T.

Commercial Works

Conliffe & Hickey Insurance

Creative Strategies- Accuflo

Credentialed Care

dGv Services

ECT Services

Epic Insurance

Episcopal Church Home

Frost-Arnett

Greater Louisville Aging in Place Alliance

Harshaw Trane

Healthcare Strategies Group

Home Helpers and Direct Link

Innovate LTC- The International Center for Long Term Care Innovation

Interstate All Battery Center

Kelly Health Services

Kentucky Hospital Association

Legal Shield

MD2U

MDOOfficeManager

MedCity Media

Medical Resources Group

Medical Software Associates

Medical Solutions

Nazareth Home

Office Environment Company

Parkinson Partners, LLC

Parkway Medical Center

RecoverCare

Senior Home Transitions

Splash Analytics

Supplies Over Seas

Targeted Retirement Strategies, LLC

The Genesis Shop

The Kentucky Center

Trinity Video Communications

TRIO Commercial Property Group

Unified Technologies

Universal Linen System

Vantiv

Virtual Telecomm

Vorro Health

Wehr Constructors

Workshop, the creative workplace

XBE, Inc.

Xlerate Health



The Program

The Louisville Healthcare Fellows (LHF) is an executive education experience providing rising health-related leaders the opportunity to connect and learn more about team building, leadership and different healthcare sectors in Health Enterprises Network's (HEN) state-wide service area. Through presentations and discussions with organizational leaders, elected officials, metro government and entrepreneurs, fellows are challenged to share their expertise with their peer fellows. Selected from different healthcare sectors (e.g. law, acute care, aging, accounting), classes range from 18 to 26 fellows a year.

The LHF program was formed by HEN in 2005 in response to Louisville's need for executive talent as defined in the "Beyond Merger" report from the Brookings Institute. In addition, the LHF purposely seeks to break down "silos" that develop within any industry...including healthcare.

Facts at a Glance

- Sessions are approximately two hours and scheduled in advance monthly (February – November)
- Organized and led by the executive director of HEN. Previous to HEN, the executive director was a CEO in medical group practice, acute care hospitals, and in insurance
- Personal contact with many of the area's most influential healthcare leaders, innovators and talent
- Limited class size and informal environment ensures active engagement. Each session is held at different locations in Kentucky
- Opportunity to build intensive relationships with program participants and 220+ alumni
- Free admissions to all HEN signature events throughout the year (while a current fellow)
- Invitation to attend exclusive social and networking activities throughout the year
- Special invitation by the executive director to attend roundtables on healthcare delivery

Exclusive to Health Enterprise Network Members

To qualify, participants must be nominated by their CEO/president and submit a completed nomination form, a current resume and a digital picture. Program fees are \$3400 and are due prior the program commences. To learn more, please contact 502.625.0149

"The Healthcare Fellows Program is a great program designed to support and nurture future Healthcare Executives. Through key profile interviews with local healthcare executives of fortune 500 companies, as well as engaging in case studies, the young executives are able to learn about pertinent issues affecting our community. It is definitely time well spent growing personally and professionally."

Curtis Warfield, CEO,
Parallon



"The Louisville Healthcare Fellows program provides an excellent avenue for future leaders to develop career-long relationships in our healthcare community which fosters the sharing of ideas, issues, solutions, and opportunities."

Ralph G. Gronefeld, Jr., President & CEO,
ResCare, LHF Alum, Class of 2005

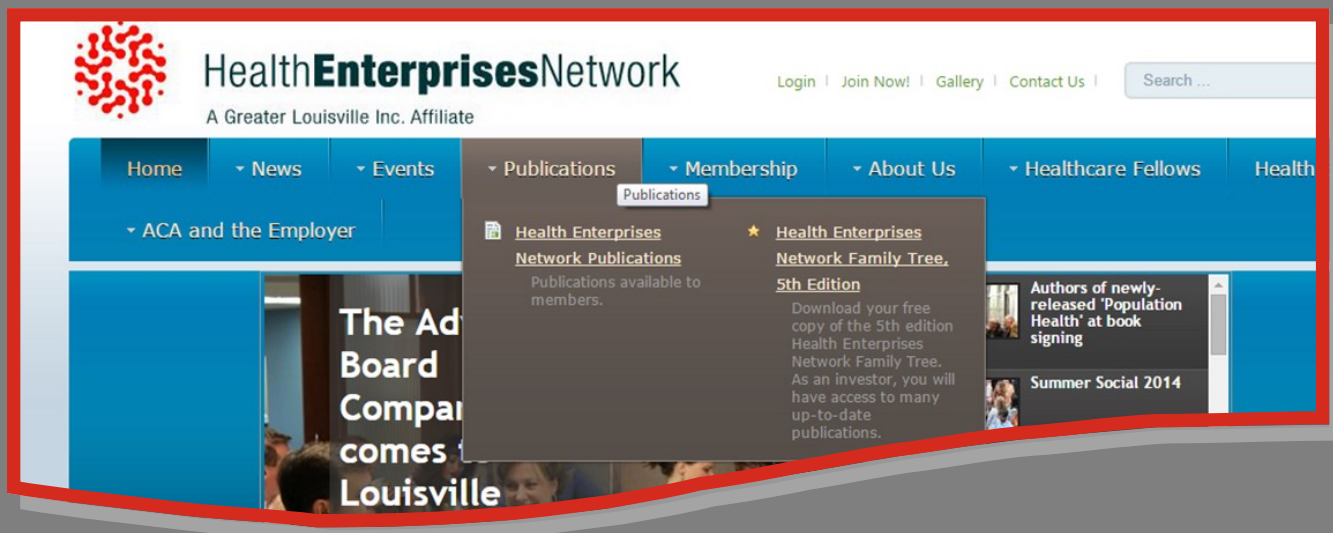
The Guide

Criteria for Inclusion

To be included in the *Guide to Health Related Businesses* a company must be doing business in the healthcare industry in Greater Louisville. It is not required that a company be engaged only in the business of healthcare, but it must derive a substantial portion of its business from the industry. Also, the company must have a physical presence in Louisville's labor market area. At a minimum, the company must have an office in the region (home-based operations can count as a local office, such as a group of sales professionals working from home for a national pharmaceutical company).

Our final criterion for inclusion is whether the company could be easily found in another directory or guide. All members of the Health Enterprises Network are included in the guide, regardless of any other criteria, but we have chosen to exclude those who can be easily found in other guides. Examples include individual facilities (such as hospitals, nursing homes, physical therapy clinics, etc. whose parent company is likely already listed) and physician, dental and chiropractic practices.

Because these are critical components of the health industry in any city, all are easily found in guides published by the Kentucky Hospital Association (kyha.com), The Luken Group's Guide Along the Road to Recovery (lukenassociates.com), Greater Louisville Medical Society (glms.org), Kentucky Dental Association (www.kyda.org), Kentucky Association of Chiropractors (www.thekac.org), Cabinet for Health and Family Services in Kentucky (www.chfs.ky.gov), Kentucky Board of Medical Licensure (www.kbml.ky.gov) and the Indiana State Department of Health (www.in.gov/isdh/).



Other Publications

- Membership Newsletters
- HealthConnect event emails
- Louisville's Family Tree of Health-Related Companies
- Summary of Louisville Life Science Patents: 1996-2002
- Louisville: A Perfect Prescription for Health-Related Enterprises

Industry Sector Definitions

Sectors	Industry Sector Descriptions
Administration, Consulting & IT Services	Back-office operations, management consulting and services, technology support and healthcare information systems.
Advertising & Marketing	Professional services that excel in drawing attention to products, services, and/or events in order to promote sales, attendance, and/or visibility.
Architects & Constructions	Professional services that deliver results in building design, maintenance, and structure.
Associations & Non-Profits	Public institutions/agencies and organizations that provide health services or support health-focused economic development activities.
Attorney Firms	Established, experienced, and licensed professionals in legal practice.
Banks, Finance & Investors	Individuals and companies that provide financial support to health-related companies such as angel investors, venture capitalists and banks.
Clinical Services, Outpatient Management & Physician Practices	Providers of healthcare services and those who manage outpatient care facilities or other clinical services (e.g., labs).
CPA/Accounting Firms	Licensed professionals who record and summarize business and financial transactions and analyze, verify, and report the results.
Education	Institutions that educate and train people for careers in health-related fields.
Healthcare Real Estate Services	Real estate brokers specializing in healthcare properties and investment sales
Hospital & Long Term Care	Facilities that provide in- and out-patient healthcare services.
Hospitality & Tourism	Friendly reception and entertainment venues for guests and visitors.
Insurance	Insurance for patients and healthcare providers, including that for facilities.
Life Sciences	Companies and researchers involved in biotechnology, pharmaceuticals/nutraceuticals, medical devices, bioinformatics, and life sciences-related services such as contract research, lab services and clinical trials.
Media	Main means of mass communication in relation to healthcare events and news.
Medical Support Services	Companies that specialize in supporting medical fields, ranging from interior design to medical supplies.

Investor Key



Administrative, Consulting and IT Services

Adhawks Advertising & Public Relations
507 N. Watterson Trail
Louisville, KY 40243
Contact: Ben Ruiz, CEO
Phone: (502) 589-3224
Website: www.adhawks.com
Full-service advertising agency offering marketing, advertising, and public relations.

Advanced Business Solutions
2908 Brownsboro Road, Ste. 206
Louisville, KY 40206
Contact: Jeff Hall
Phone: (502) 896-2557
Website: advancedbusinesssolutions.com

Advantage Image, Inc.
801 Envoy Circle
Louisville, KY 40299
Contact: Mike Lewis, Owner
Phone: (502) 238-3282
Website: www.advantageimage.com
Document imaging professionals.

Adverttek, Inc.
802 Stone Creek Parkway, Ste. 2
Louisville, KY 40223
Contact: Toni & Lee Hagendoorn
Phone: (502) 671-1007
Website: www.adverttek.net
Healthcare software.

Advocacy Action Network
120 Sears Avenue, Ste. 212
Louisville, KY 40207
Contact: Christian Miller
Phone: (502) 894-0222
Website: www.advocacyaction.net

Ajilon
101 Bullitt Lane, Ste. 206
Louisville, KY 40222
Contact: Kim Blanding
Phone: (502) 339-9007
Website: www.ajilon.com
Professional Staffing.

Alliance Imaging
525 Rainier Drive
Richmond, KY 40475
Contact: Mike Rhodus
Phone: (859) 661-2345
Website: www.allianceimaging.com

Allscripts Healthcare Solutions
222 Merchandise Mart Plaza, Suite 2024
Chicago, IL 60654
Contact: Eddie Sue McDowell, Office Manager
Phone: 1 (800) 654-0889
Website: www.allscripts.com
A leading provider of clinical software, connectivity and information solutions for more than 20,000 physicians nationwide.

American Hospital Directory
166 Thierman Lane
Louisville, KY 40207
Contact: Paul Shoemaker, President & CEO
Phone: (502) 899-7738
Website: www.ahd.com
Provides data and statistics about more than 6,000 hospitals nationwide.

Aon Hewitt Louisville
220 W. Main Street, Ste. 350
Louisville, KY 40202
Contact: Curt Dame, Vice President
Phone: (502) 561-1500
Website: www.aon.com

Globally create innovative solutions in insurance and risk management, human capital consulting, and insurance underwriting to help clients.

Aspect

1700 East Point Parkway, Ste. 270
Louisville, KY 40223
Contact: Marsha Fall
Phone: (502) 253-5475
Website: www.aspect.com

Quilogy provides clinical, business and technical solutions leveraging Microsoft technologies to develop and implement solutions for hospitals, outpatient facilities, pharmaceutical companies, software vendors and public sector health agencies.

ASPECTx

7003 Harrods Landing Drive
Prospect, KY 40059
Contact: Dawn Yankeelov
Phone: (502) 292-2351
Website: www.aspectx.com

ASPECTx currently works closely in the healthcare space, supporting all types of organizations, & entities in the arena. ASPECTx key service areas: competitive intelligence, marketing, public relations, web consulting & business strategy consulting.

Atticus Ventures, LLC
Waterfront Plaza, 325 W. Main St., Ste. 2000
Louisville, KY 40202
Contact: Frank Jemley
Phone: (502) 587-7730
Website: www.atticusventures.com

Avoca
1700 Eastpoint Parkway, Ste. 220
Louisville, KY 40223
Contact: Kent Darbro
Phone: (502) 753-4936
Website: www.avoca-med.com
Physician billing company.

AxiomOne
1230 Liberty Bank Lane, Ste. 130
Louisville, KY 40222
Contact: Kurtis Mishler
Phone: (502) 292-6520
Website: www.axiomone.com
Wide array of psychological testing, competency modeling, best selection practices, and more-can help you maximize that advantage and take your business to new levels of success.

Bellwether Software
9900 Shelbyville Road, 6B
Louisville, KY 40223
Contact: Sunny Dronawat, President & GM
Phone: (502) 426-5463
Website: www.bellwethercorp.com

Benefits Administrators, LLC
301 E. Main Street, Ste. 650
Lexington, KY 40507
Contact: Leslie O'Bryan
Phone: (859) 255-1154
Website: www.benadms.com
Guidance for a successful employee benefit plan.

Bittners
731 E. Main Street
Louisville, KY 40202
Contact: Claire Alagia, CEO
Phone: (502) 584-6349
Website: www.bittners.com

Bluegrass Biomedical, Inc.
2601 Holloway Road
Danville, KY 40299
Contact: Rick Serres, President
Phone: (859) 238-7973
Website: www.bluegrassbiomedical.com

BluegrassNet
321 E. Breckinridge Street
Louisville, KY 40203
Contact: Dale Hamilton
Phone: (502) 589-4638
Website: www.bluegrass.net

Brainswork USA, LLC
2411 Newburg Road
Louisville, KY 40205
Contact: Djenita Pasic
Phone: (502) 459-6486
Website: www.brainswork.us
Brainswork connects and develops ideas, projects, products, companies, businesses, even cities and countries.

BTM Engineering, Inc.
3001 Taylor Springs Drive
Louisville, KY 40220
Contact: Phillip Bills
Phone: (502) 459-8402
Website: www.btmeng.com

Capitol Solutions
9911 Secretariat Drive
Goshen, KY 40026
Contact: Kelley Abell
Phone: (502) 558-5586
Website: www.capitolsolutions.net

Website: www.capitolsolutions.net

A full service lobbying, grassroots training and consulting firm assisting clients with legislative and regulatory concerns at all levels of state and federal government.

CBRE | Louisville
6060 Dutchman's Lane, Ste. 100
Louisville, KY 40205
Contact: David Hardy
Phone: (502) 429-6700
Website: www.cbrelouisville.com

CDM Healthcare Financial Services
8015 Catherine Lane #4
Louisville, KY 40222
Contact: Jerry McClellan
Phone: (502) 429-8505
Website: www.cdmsi.com
Worked with over 200 providers & 30 provider offices increasing profits by an average of 30%. Our services include: A/R management, insurance & patient billing.

Centric Consulting LLC

1215 Lyons Rd., Bldg F
Dayton, OH 45458
Contact: Dion Dunn, Louisville Practice Lead
Phone: (502) 645-2514
Website: www.centricconsulting.com
A full-service management consulting organization providing information technology and process improvement services to the Healthcare Industry. Offices in Louisville, Cincinnati, Indianapolis and Columbus.

ChiMed Healthcare Business Consulting
462 S. 4th Street, Ste. 2500
Louisville, KY 40202
Contact: Christine Miller
Phone: (502) 587-1719
Focused on providing a higher standard of business care for healthcare businesses to help maximize profits and minimize distractions. We offer services to healthcare providers of all shapes and sizes - from hospitals to private practices and everything in between.

Cisco

12910 Shelbyville Road
Louisville, KY 40243
Contact: Greg Aaron
Phone: (502) 254-4400
Website: www.cisco.com
Cisco creates unprecedented value and opportunity for our customers, employees, investors and ecosystem partners and has become the worldwide leader in networking - transforming how people connect, communicate and collaborate.

Click I.T.

2000 Warrington Way, Suite 240
Louisville, KY 40222
Contact: Sam Smith

Phone: (502) 287-1731
Website: www.clickitstaffing.com

CMTA
10411 Meeting Street
Prospect, KY 40059
Contact: James Benson
Phone: (502) 326-3085
Website: www.cmtaegrs.com
CMTA is a Louisville-based top 100 MEP consulting engineering firm that specializes in sustainable and technology design for healthcare. The 80-person company, the largest MEP firm in Kentucky, also has offices in Lexington and Houston.

Colliers Harry K. Moore
7316 New LaGrange Road
Louisville, KY 40222
Contact: David Wood
Phone: (502) 394-2510
Website: www.colliersharrykmoore.com

Commonwealth Computer Recycling
1361 S. 15th Street
Louisville, KY 40210
Contact: James Shields
Phone: (502) 637-4551
Website: www.recyclelouisville.com
Computer recycling.

Comprehensive Consulting
4010 Dupont Circle, Ste. 404
Louisville, KY 40207
Contact: Kim Brody
Phone: (502) 893-8449
Website: www.compreconsult.com
Medical Utilization Review; Medical Case Management; Medical Bill Review.

Concentra Inc.
Contact: Jon Conser, Senior VP, Sales
Phone: (866) 944-6046
Website: www.concentra.com

Credentialed Care

9900 Corporate Campus Drive, Ste. 3000
Louisville, KY 40223
Contact: Jerry Flanagan, CEO
Website: www.credentialedcare.com

DeLor
902 Flat Rock Rd.
Louisville, KY 40245
Contact: Kenneth D. Delor, President
Phone: (502) 584-5500
Website: www.delor.com
Brand Identity Consultants, help companies define their value to the marketplace through strong brands and integrated communications.

Deyta, Inc.
7400 New LaGrange Road, Ste. 200
Louisville, KY 40222
Contact: J. Kevin Porter, CFO
Phone: (502) 896-8438
Website: www.deyta.us
Healthcare industry management consulting.

DICKEN Enterprises, Inc.
9710 Park Plaza Avenue, Ste. 210
Louisville, KY 40241
Contact: Kenneth Dicken, Chairman
Phone: (502) 327-0151
Website: www.dicken.com
National consulting services firm specializing in temporary assignments to clients in business disciplines including management, information systems, accounting, finance, sales, marketing, legal, and human resources.

ebit Information Systems
300 Missouri Avenue, Ste. 100
Jeffersonville, IN 47130
Contact: Gerald Joiner, Sales Executive
Phone: (812) 285-8285
Website: www.ebitinfosys.com
IT staffing, recruiting, consulting, and support.

EMC
312 S. Fourth Street
Louisville, KY 40202
Contact: Donna Williams
Website: www.emc.com/index.htm

Emergint
455 S. 4th Street, Ste. 1250
Louisville, KY 40202
Contact: Gil Delgado, President & CEO
Phone: (502) 896-6210
Website: www.emergint.com
A health data solutions company providing clinical data for research activities.

Executive Communications, Inc.
310 N. Evergreen Rd., Suite 200
Louisville, KY 40223
Contact: Elizabeth Welsh, President
Phone: (502) 412-5450
Website: www.executive-com.com
Provides direct contact services for use in political advocacy, marketing research programs and new business or membership development campaigns.

Experis - A Manpower Company
9401 Williamsburg Plaza, Ste. 202
Louisville, KY 40222
Phone: (502) 287-8704
Website: www.comsys.com

Experis accelerates business growth and careers by intensely attracting, assessing and placing specialized expertise in IT, Finance & Accounting, Engineering and other industries.

EZ Outlook Web Services, Inc.
12305 Westport Road, Ste. 207
Louisville, KY 40245
Contact: Tom Haselden, President/CEO
Phone: (502) 638-2127
Website: <http://www.ezoutlook.com>
An information technology company that focuses on electronic medical records applications and exchanged hoSted services to the commercial business market.

FacilityONE
300 Distillery Commons, Suite 300
Louisville, KY 40206
Contact: Dale Cain, CEO
Phone: (502) 805-2100
Website: www.facilityone.com
Facility management software.

Feddern Financial Consulting Group
603 North Shore Drive, Ste. 102
Jeffersonville, KY 47130
Contact: Otto Feddern, Owner
Phone: (502) 442-0363
Website: www.fedderngroup.com

Fine Tune
301 E. Main Street, Ste. 201
Louisville, KY 40202
Contact: Jeff Carman
Phone: (502) 610-0200

Firstsource
1661 Lyndon Farm Ct.
Louisville, KY 40223
Contact: Aishwarya Vohra
Phone: (502) 419-0855
Website: www.firstsource.com
Firstsource is an innovative provider of customer-centric business process management services

Freedom Communications
3305 Gilmore Industrial Blvd
Louisville, KY 40213
Contact: Brian Banta, Manager
Phone: (502) 240-7000
Website: www.freedomcomm.com
Hospital equipment - maintenance and service.

Gerimed
9505 Williamsburg Plaza, Ste. 200
Louisville, KY 40222
Contact: John Schutte, President
Phone: (502) 423-0351

Website: www.gerimedgso.com
Drug stores.

Gyroskope

1335 Story Ave.
Louisville, KY 40206
Contact: Todd Smith
Phone: (502) 640-7344
Website: www.gyroskope.com
Creator of *Gyroskope Family Network*, a closed-network platform for aging people to connect with their family.

HCA – National Patient Account Services
2700 Blankenbaker Road
Louisville, KY 40299
Contact: Richard Swanson, Director
Phone: (502) 240-6190
Website: www.npasweb.com

Healthcare Strategy Group, LLC

9900 Corporate Campus Drive, Ste. 3100
Louisville, KY 40223
Contact: David Miller, President
Phone: (502) 814-1188
Website: www.healthcarestrategygroup.com

Hopewell Healthcare Associates
1029 Monarch Street, Ste. 110
Lexington, KY 40513
Contact: Kathy Sanders
Phone: (859) 368-7577
Website: www.hopewellhealthcare.com
Healthcare Staffing, specializing in OR, ICU, ER and labor/delivery. Healthcare personnel, travel nursing throughout Kentucky and Ohio.

HR Affiliates
1930 Bishop Lane, Ste. 111
Louisville, KY 40218
Contact: Marcy Clark
Phone: (502) 485-9675
Website: www.hraffiliates.com

InnovateLTC

201 E. Jefferson Street, Ste. 110
Louisville, KY 40202
Contact: John Reinhart
Phone: (502) 569-0301
Website: www.innovateltc.com
Enable the development, packaging and distribution of sustainable, scalable and disruptive products, services and technologies.

Institute for Lean Systems
PO Box 8173
Louisville, KY 40257
Contact: David Veech, Executive Director
Phone: (502) 298-8710
Website: www.theleanway.com

Provides training and transformation services that institutionalize Lean Six Sigma processes and dramatically increase operational efficiencies. We also design and develop information systems that support and sustain organizational efficiencies.

Interapt

300 E. Market Street, Ste. 260
Louisville, KY 40202
Contact: Michael Rebilas, Senior Enterprise Architect
Phone: (270) 312-8514
Website: www.interapt.com

InVisionHR
2501 Nelson Miller Parkway
Louisville, KY 40223
Contact: Mike Stinson
Phone: (502) 526-0177
Website: www.invisionhr.com

iPractice

51 Century Boulevard, Ste. 125
Nashville, TN 37214
Contact: Beth Grubbs Manager, Marketing & PR
Phone: (615) 574-6108

IQS Research

308 N. Evergreen Road, Ste. 200
Louisville, KY 40243
Phone: (502) 244-6600
Website: www.iqsresearch.com
Independent data center containing private healthcare reimbursement information. Specialties covered include family practice, pediatrics, OB/GYN and others. Data is available for the major markets in the Midwest with coverage expanding annually.

James Bersot and Associates, LLC
2406 Belknap Beach Road
Prospect, KY 40059
Contact: James Bersot
Phone: (502) 228-4919

Kelly Health Services

9100 Shelbyville Rd., Suite 140
Louisville, KY 40222
Contact: Beth Johnson
Phone: (502) 425-7131
Website: www.kellyservices.com
Kelly Services has provided workforce solutions to customers in a variety of industries throughout its history. Kelly Services also offer a comprehensive array of outsourcing and consulting services for customers, including recruitment, human resource management, vendor management, and outplacement services on a global basis.

Kforce Professional Staffing
10200 Forest Green Blvd., Suite 304

Louisville, KY 40223
Contact: Sam Smith, Market VP
Phone: (502) 339-2900
Website: www.kforce.com

Kforce Inc. is a multi-discipline staffing firm that has been providing experienced, qualified KnowledgeForce workers for more than 45 years. Provide temporary assignments and permanent placements in technology, finance & accounting, healthcare and clinical research disciplines for private and public organizations of all sizes including various federal, state and local government entities.

LaBaugh & Associates
1941 Bishop Lane, Ste. 621
Louisville, KY 40218
Contact: Tom LaBaugh
Phone: (502) 584-3446
Website: www.labaugh.com

Louisville Relocation Services, Inc.
401 S. 4th Street, Ste. 1200
Louisville, KY 40202
Contact: Deanna Grubbs
Phone: (502) 583-2956
Website: www.louisvillerelocation.com
A premier temporary housing provider.

Luken & Associates
5110 MacIntosh Avenue
LaGrange, KY 40031
Contact: John Luken
Phone: (502) 222-2065
Website: www.lukenassociates.com
Long-term healthcare communications.

Majestic Eagle Production
2229 Highland Springs Place
Louisville, KY 40245
Contact: Tammy Wells
Phone: (502) 254-1660
Website: www.majesticeagleproductions.com

Marsh USA Inc.
400 W. Market Street
Louisville, KY 40202
Contact: John Logan, Managing Director
Phone: (502) 217-8452
Website: www.marsh.com
Marsh USA - Louisville-Marsh understands that finding the opportunity behind the risk means knowing just as much about the healthcare industry as we do our own. By applying Healthcare Practice expertise, they supply ancillary support and advice for all lines of insurance & risk consulting.

Medavant Healthcare Solutions
2533 Centennial Blvd., Ste. B
Jeffersonville, IN 47130
Contact: Chuck Blinn, VP of Technology

Phone: (812) 944-3865
Website: www.medavanthealth.com
Division of Proxymed but go by Metavant HC Solutions.

Medical Data Technologies
6250 N. Parma Rd.
Parma, MI 49269
Contact: Eric Hilder
Phone: (502) 356-3731
Website: www.emedpro.com

Medical Dental Business Consultants, LLC
1930 Bishop Lane, Ste. 404
Louisville, KY 40218
Contact: William H. Engle, Sr.
Phone: (502) 459-5255
Website: www.mdbcllc.com
Healthcare practice management, accounting and taxes.

Medical Mediation Services, LLC
6006 Brownsboro Park Blvd, Ste. D
Louisville, KY 40207
Contact: Vanessa Nelson, President
Phone: (502) 895-8828
Website: www.kymedicalmediation.com
Designs, installs, and maintains conflict resolution systems for health care providers to ensure problem solving at the earliest and lowest level using communication, negotiation, mediation, and arbitration.

Medical Solutions
6060 Dutchman's Lane
Louisville, KY 40205
Contact: Kathleen Boland, Account Executive
Phone: (502) 459-0252
Website: www.med-solutions.net
Medical Solutions is Louisville's elite medical staffing company specializing in the placement of qualified medical professionals in healthcare organizations throughout the metropolitan Louisville and Southern Indiana areas.

MedX12, Inc.
10200 Forest Green Blvd.
Louisville, KY 40223
Contact: Michael Sostarich, Founder/CEO
Phone: (502) 339-7175
Website: www.medx12.com
Health claims clearinghouse offering EHR, Practice Management and E-Prescribe products, and community information hub connection to healthcare providers, while supporting Federal and State initiatives to improve healthcare systems.

Mercer
462 S. 4th Street, Ste. 1100
Louisville, KY 40202
Contact: Terry Tyler, Principal
Phone: (502) 561-4500
Website: www.mercer.com

Global human resource consulting firm providing human capital consulting, outsourcing and investment services.

Metavant Healthcare Solutions
2533 Centennial Blvd., Ste. B
Jeffersonville, IN 47130
Contact: Chuck Blinn, VP of Technology
Phone: (812) 944-3865
Website: www.medavanthealth.com
Division of Proxymed but go by Metavant HC Solutions.

Microsoft Corporation
9900 Corporate Campus Drive, Ste. 300
Louisville, KY 40223
Contact: Greg Aaron, Enterprise Sales Manager
Phone: (502) 538-1379
Website: www.microsoft.com

Mission Data
2300 Hurstbourne Village Drive, Ste. 1100
Louisville, KY 40299
Contact: Lori Ruzicka, Office Manager
Phone: (502) 245-6756
Website: www.missiondata.com
Web development and software engineering company.

Net Tango, Inc.
12804 Townepark Way, Ste. 100
Louisville, KY 40272
Contact: Susan Weiss, President
Phone: (502) 245-1750
Website: <http://www.nettango.com>
Net Tango designs and builds interactive websites, software applications and database solutions. Help clients to leverage practical, cost-effective technology solutions to solve problems, achieve measurable results and meet strategic objectives.

NetQuest Technologies Incorporated
6 Rio Vista
Louisville, KY 40207
Contact: Cris Anderson
Phone: (502) 551-9332
Website: www.netquestec.com
RFID devices for human and animal diagnostics.

New Age Technologies
819 W. Main Street
Louisville, KY 40202
Contact: Tony Fink, COO
Website: www.newatcorp.com
Offers highly knowledgeable VMware consultants, IT staffing professionals and IT training experts.

Northwestern Mutual Financial Network
462 S. 4th Avenue, Ste. 1900
Louisville, KY 40202
Contact: Linden Ferguson, Financial Representative
Phone: (502) 562-2429
Website: www.nmfn.com

Noveen Consulting
9100 Marksfield Road, Ste. 100
Louisville, KY 40222
Contact: Mo Deljoo
Phone: (502) 454-5932
Website: www.noveen.com
Infrastructure program management, assessment planning, project management and peer review.

PAETEC
Six Corporate Center, 9780 Ormsby Station Rd
Louisville, KY 40243
Contact: Troy Jones, Senior Account Executive
Phone: (502) 753-6680
Website: www.windstreambusiness.com

Pallas Partners, LLC
12305 Westport Road, Ste. 4
Louisville, KY 40245
Contact: Mathew Saltzman, Managing Partner, CEO
Phone: (502) 632-1771
Website: www.pallaspartners.com

Parallon Business Solutions
2700 Blankenbaker Parkway, Ste. 100
Louisville, KY 40299
Contact: Curtis Warfield, CEO
Phone: (502) 572-3264
Website: www.npasweb.com
Customer service focused collections for some 220 facilities nationwide; part of HCA.

Parsons
401 South 4th Street, Ste. 900
Louisville, KY 40202
Contact: Barry Badinger
Phone: (502) 569-1400
Website: www.parsons.com

Peak 10
725 Barrett Avenue
Louisville, KY 40204
Contact: Matt Phillips, VP/General Manager
Phone: (502) 315-6000
Website: www.peak10.com
Data center operator and managed services provider.

Peredo Associates
400 Missouri Avenue
New Albany, IN 47130
Contact: Mark Peredo
Phone: (812) 941-5115
Website: www.peredoassociates.com
Marketing, Advertising, Design.

Peritus Public Relations
200 S. 5th Street, Ste. 503N
Louisville, KY 40202
Contact: Tim Mulloy
Phone: (502) 585-3919

Website: www.perituspr.com

Peritus is a full-service public relations and public affairs firm serving a wide range of healthcare clients. We are headquartered in Louisville and have offices in Frankfort, Lexington, Indianapolis and Nashville.

Preferred Health Plan, Inc.
10160 Linn Station Road, Ste. B-200
Louisville, KY 40223
Contact: Mary Stivers, Operations
Phone: (502) 339-7500
Website: www.phpinc.com
Third-party administrator.

Preferred Medical Network
309 Townepark Circle
Louisville, KY 40243
Contact: Amy Wrightsel, COO
Phone: (502) 489-5045
Website: www.preferredmedical.net
Medical equipment & supplies.

Price Weber
10701 Shelbyville Road
Louisville, KY 40243
Contact: Mike Nickerson, Chief Marketing Officer
Phone: (502) 499-9220
Website: www.priceweber.com
Marketing firm.

PrideStaff
1230 Liberty Bank Lane, Ste. 130
Louisville, KY 40222
Contact: Kurtis Mischler
Phone: (502) 292-4200
Website: www.pridestaff.com
A specialty recruitment and staffing organization focusing on medical administrative, accounting/finance and customer service. Our client specific on Target selection system ensures a targeted approach to every candidate you consider.

ProTech Services
13510 Hunters View Court
Prospect, KY 40059
Contact: Joseph Koenigsmark, President
Phone: (502) 228-1778
Hospital consultants.

Ready Electric Company
3300 Gilmore Industrial Boulevard
Louisville, KY 40213
Contact: Andrew Windhorst
Phone: (502) 893-2511
Website: www.readyelec.com

Rives Development Associates

4010 Dupont Circle, Ste. 448
Louisville, KY 40207
Contact: Jim Rives, Senior Partner
Phone: (502) 896-1336

A management consulting group that provides strategic planning facilitation, strategy development, senior level business advice and management team review, structuring and coaching.

Robert Half Management Resources
9300 Shelbyville Road
Louisville, KY 40222
Contact: Mark Shee, Account Executive
Phone: (502) 412-0588
Website: www.roberthalffinancial.com

Robert Slaton Consulting
501 W. Main Street
Georgetown, KY 40324
Contact: Robert Slaton
Phone: (502) 494-8223

Rycor Health Care Management
8201 Farmwood Way
Louisville, KY 40291
Contact: Joseph Ryan
Phone: (502) 239-1611
Hospital consultants.

SDGBlue
501 Darby Creek Road, Suite 9
Lexington, KY 40509
Contact: Jim Czerwonka
Phone: (502) 301-8845

Service Solutions
2518 Plantside Drive
Louisville, KY 40299
Contact: Steve Edrington, President
Phone: (502) 909-3096
Website: www.servicesolutions.us
Computer and software agency.

Skyhook Engineering
201 S. Shelby Street
Louisville, KY 40202
Contact: Ron Peron
Phone: (502) 589-7707

Software Information Systems
2000 Warrington Way, Ste. 170
Lexington, KY 40222
Contact: Chris Henry, VP Sales
Phone: (859) 977-4750
Website: www.thinksis.com

SML Communications
1274 Willow Avenue
Louisville, KY 40204
Contact: Susan McNeese Lynch
Phone: (502) 836-5347

Splash Analytics

311 Townepark Circle, Suite 100
Louisville, KY 40243
Contact: Bob Doligale, President
Phone: (502) 333-9632
Website: www.splashanalytics.com

StackWave LLC
4949 Old Brownsboro Rd, Ste. 256
Louisville, KY 40222
Contact: Daniel Goldman, Founder
Phone: (502) 514-9133
Website: stackwave.com

Expertise in web application development to simplify the lives and amplify the efforts of researchers, caregivers, and executives in the life sciences industry.

Synergy Global
2622 McCoy Way
Louisville, KY 40205
Contact: Anne Powell
Phone: (502) 727-4798
Website: www.synergy-global.com

Synergy Solutions LLC
3224 Cawein Way
Louisville, KY 40220
Contact: Alecia Kennedy, M.P.H
Phone: (502) 548-5592
Website: synergysolutionsllc.com

Systemax Corporation
9509 Hwy 42, Ste. 100
Prospect, KY 40059
Contact: Max Underwood, President
Phone: (502) 228-8336
Website: www.syStemaxcorp.com
Software development specializing in medical documentation.

TBD Design Inc.
2119 Edgehill Road
Louisville, KY 40205
Phone: (502) 212-1706
Website: www.tbddesign.com
TBD design is a branding and communications firm rooted in Louisville, KY.

Teksystems
700 N. Hurstbourne Pkwy., Suite 250
Louisville, KY 40222
Contact: Travis Rickards, Director of Business Operations
Phone: (502) 671-2121

Website: www.teksystems.com
A leading provider of IT staffing, IT talent management and IT services.

TelScreen
8012 Vine Crest Ave, Ste. 3
Louisville, KY 40222
Contact: Wesley Harris, VP & COO
Phone: (502) 515-1806
Website: www.telscreen.com

The Allegro Group
101 S. 5th Street, Ste. 3830
Louisville, KY 40202
Contact: W. Earl Reed, III
Phone: (502) 479-8114
Website: www.theallegrogroup.com
Healthcare financial advisory services.

The Muldoon Group

Primary Contact: Carol Muldoon
Phone: *** **

The Rawlings Group
1 Eden Parkway
LaGrange, KY 40031
Contact: Gary Rawlings, President
Phone: (502) 587-1279
Website: www.rawlingsgroup.com

The Rotunda Group, LLC
PO Box 70331
Louisville, KY 40279
Contact: B. Riggs Lewis, Founding Partner
Phone: (502) 817-9795
Website: www.therotundagroup.com
Aids business community with complex public policy issues at the local, state and federal levels of government.

Todd Veredus Asset Management
101 S. 5th Street, Ste. 3160
Louisville, KY 40202
Contact: William P. O'Connor
Phone: (502) 585-3121
Website: www.toddinvestment.com
One of the regions oldest and largest independent asset management firms. Separate account management for retirement, endowment, self-insurance, and other institutional plans. Effectively managing portfolio risk with superior returns since 1967. Consistency, Discipline, Performance.

Trover Solutions

9390 Bunsen Pkwy
Louisville, KY 40220
Contact: Robert Bader, CEO
Phone: (502) 214-1340

Website: www.troversolutions.com
Healthcare subrogation.

Virtual Telecomm

Louisville, KY 40205
Contact: John Laswell
Phone: (502) 400-8600
Website: www.virtualtelecomm.com

Visual Aids Electronics
320 W. Jefferson Street
Louisville, KY 40202
Contact: Kristin Erdmann
Phone: (502) 589-4088
Website: www.vaecorp.com

VorroHealth

109 W. Gentile St.
Layton, UT 84041
Contact: Rhonda Dowdy, Sr. Director of Sales-East
Phone: (801) 336-3043

V-Soft Consulting Grouping
2115 Stanley Gault Parkway, Suite 200
Louisville, KY 40223
Contact: Greg Brendel, Sales & Marketing
Phone: (502) 425-8425
Website: www.vsoftconsulting.com

Wax Custom Communications
730 W. Main St., Ste. 201
Louisville, KY 40202
Contact: Craig Fairfield, Account Executive
Phone: (502) 442-2558
Website: www.waxcom.com

WFJ Associates
14501 Three Oaks Terrace, Suite 100
Montpelier, VA 23192
Contact: Stephanie Coulter
Website: www.wfjassociates.com

Work-A-Haulix, LLC
4100 Eastmoor Road
Louisville, KY 40218
Contact: Scott Fizthugh
Phone: (502) 451-8601
Website: www.workahaulix.com
A valuable resource for all of your office needs
(licensed - insured - bonded): office relocation and
configuration, furniture assembly and installation,
secured warehouse storage, confidential records
storage and shredding, and 24 hour emergency
response.

Wunderlin Company
2123 Frankfort Avenue
Louisville, KY 40206
Contact: Karen Wunderlin

Phone: (502) 895-3689
Website: www.wunderlin.com

Xerxes, Inc.
500 W. Jefferson Street, Ste. 2700
Louisville, KY 40202
Contact: Rory McDonald
Phone: (502) 473-8811
Software for 3D displays and training.

Xlerate Health

300 E. Market Street, Suite 260
Louisville, KY 40202
Contact: Bob Saunders
Website: www.xleratehealth.com

York Companies
275 Quartermaster Court
Jeffersonville, IN 47130
Contact: Rob Gassman
Phone: (812) 282-7766
Website: www.york-companies.com
Identify and facilitate job and career
opportunities and solutions.

Advertising & Marketing

Adhawks Advertising & Public Relations
507 N. Watterson Trail
Louisville, KY 40243
Contact: Ben Ruiz, CEO
Phone: (502) 589-3224
Website: www.adhawks.com
Full-service advertising agency offering market-
ing, advertising, and public relations.

Allegra Marketing Services
11750 Diode Court
Louisville, KY 40299
Contact: Jennifer Eberle
Phone: (502) 895-1530
Website: www.allegralouisville.com

Blue Egg Strategies, LLC
505 Upland Road
Louisville, KY 40206
Contact: Deanna Pelfrey
Phone: (502) 581-1455
A strategic public relations/marketing consultan-
cy that counsels clients with a local, regional, na-
tional and international presence.

Demand Strategies, Inc.
2203 Mahan Ave.
Louisville, KY 40299
Contact: Cathleen McCarty, President
Phone: (502) 419-8294
Website: www.demandstrategies.com
Marketing services company.

Dynamic Marketing Strategies LLC
9549 Taylorsville Road
Louisville, KY 40299
Contact: Robin Evitts
Phone: (502) 641-1479
Website: www.dynamicmarketingky.com

Group Nine Marketing
952 S. 3rd Street, Ste. 201
Louisville, KY 40203
Contact: Shirley Rivoli, President
Phone: (502) 589-5785
Website: www.groupnine.com
Marketing and creative work.

L&D Mail Masters
110 Security Parkway
New Albany, IN 47150
Contact: Diane Fischer
Phone: (812) 981-7161
Website: www.ldmailmasters.com
Mail Campaigns.

New West Agency
9630 Ormsby Station Road
Louisville, KY 40223
Contact: Rebecca Simpson
Phone: (502) 891-2500
Website: www.newwestagency.com
Marketing, Advertising, Public Relations and Websites.

Parker Marketing
10415 Worthington Lane
Prospect, KY 40059
Contact: Ginger Parker, Marketing Consultant
Phone: (502) 394-9210
Website: www.parkermarketinggroup.com
Health marketing.

Red7e
637 W. Main Street
Louisville, KY 40202
Contact: Pip Pullen
Phone: (502) 585-3403
Website: www.red7e.com

The Marketicians
12123 Shelbyville Road, Ste. 100-112
Louisville, KY 40243
Contact: Rolf Provan
Phone: (502) 379-4192

Vest Advertising
3007 Sprowl Road
Louisville, KY 40299
Contact: Rita Vest, President/CEO
Phone: (502) 267-5333
Website: www.vestadvertising.com

Architects/Construction

Abel Construction Company
3401 Bashford Avenue Court
Louisville, KY 40218
Contact: Tonii Rizzo, Sr. VP
Phone: (502) 451-2235
Website: www.abelconstruct.com
Deliver quality construction services to clients through many years of experience in general contracting, construction management, design/ build, facilities maintenance, outsourced construction services, and lease back options.

Arrasmith, Judd, Rapp, Chovan Inc.
607 W Main Street, Ste. 400
Louisville, KY 40202
Contact: Graham Rapp
Phone: (502) 581-0042
Website: www.ajrarch.com/v3/
Medical facilities architect.

Barnette Bagley Architects, PSC
350 E. Main Street
Lexington, KY 40507
Contact: Lee Rambo Bagley
Phone: (859) 226-0000

Dharma Construction
4011 Gardiner Point Dr., Ste. 100
Louisville, KY 40213
Contact: Jon Mapp
Phone: (502) 994-5419

GBBN Architects
609 W. Main Street
Louisville, KY 40202
Contact: Todd Dunaway
Phone: (513) 241-8700
Website: www.gbbn.com
Providing excellence in healthcare architecture, interiors, planning code and life safety, facility information management solutions and specifications since 1958 with over 40 registered architects.

Gresham Smith & Partners
101 S. 5th Street, Ste. 1400
Louisville, KY 40202
Contact: James Bearden
Phone: (502) 627-8900
Website: www.greshamsmith.com

H & H Design-Build
135 W. Market Street
New Albany, IN 47150
Contact: Robert Heinz
Phone: (812) 944-2396
Website: www.hhsd.com
Design and construction of diagnostic and treatment facilities nationwide.

Harshaw Trane
12700 Plantside Drive
Louisville, KY 40299
Contact: Monica Craigmyle
Phone: (502) 499-7000
Website: www.harshawtrane.com

JRA Architects
730 W. Main Street, Ste. 120
Louisville, KY 40202
Contact: Mark Trier
Phone: (502) 583-8621
Website: www.JRArchitects.com

Kelley Construction
12550 Lake Station Place
Louisville, KY 40299
Contact: Joe Kelley, President & CEO
Phone: (502) 479-6528
Website: www.kelleyconstruction.com

Land Design & Development Inc.
503 Washburn Avenue, Ste. 101
Louisville, KY 40222
Contact: Ann Richard
Phone: (502) 426-9374
Website: www.ddd-inc.com
Offers surveying, land planning, civil engineering, and landscape architecture.

Laughlin Millea Hillman Architecture
3211 Grant Line Road, Ste. 30
New Albany, IN 47150
Contact: Tom Millea
Phone: (812) 944-2222
Website: www.LMHArchitecture.com

Luckett & Farley
737 S. Third Street
Louisville, KY 40202
Contact: Thomas Hammer, Senior Project Manager
Phone: (502) 585-4181
Website: www.luckett-farley.com
A nationally recognized A/E firm, specializes in planning, architecture, engineering, interior design and program management services for the healthcare industry including hospitals, MOB's and clinics.

Messer Construction Co.
11001 Plantside Drive
Louisville, KY 40299
Contact: Erin Hall
Phone: (502) 261-9775
Website: www.messer.com
Messer is a full-service, regional general contractor and construction manager. For over 75 years, Messer has built a premier reputation for providing outstanding construction experiences and value to a diverse group of clients and owners.

Schaefer General Contracting Services
4716 Pinewood Road
Louisville, KY 40218
Contact: Anita Massey
Phone: (502) 968-1864
Website: www.schaefercompany.com
Since 1954, Schaefer General Contracting Services specializes in commercial contracting for the medical industry. Uniformed and experienced, the Schaefer staff provides quality renovations of occupied spaces with minimal disruption.

TEG
127 S. 6th Street
Louisville, KY 40202
Contact: Janet Lively
Phone: (812) 282-3700
Website: www.teg123.com
Founded in 1989, TEG has provided clients with solutions and expertise on an international scale for two decades. It's the unique company culture of service, quality and creativity that keeps our eyes focused and our delivery uncompromised.

Turner Construction Company
633 W. Main St., Ste. 450
Louisville, KY 40202
Contact: Larry Blackburn
Phone: (513) 721-4224
Website: www.turnerconstruction.com

Wehr Constructors
2517 Plantside Drive
Louisville, KY 40299
Contact: Doug Heisler
Phone: (502) 491-9250
Website: www.wehrconstructors.com

Whittenberg Construction Co.
4774 Allmond Ave
Louisville, KY 40209
Contact: Chris Bingaman
Phone: (502) 361-8891
Website: www.wccbuild.com
Whittenberg Construction Co. is a construction

management, general contractor with over 85 years in Louisville. We have healthcare / medical experience having completed every type of medical project in the region. Our project management is ASHE/KSHE certified.

Associations and Non-profits

Alzheimer's Association, Greater Kentucky and Southern Indiana Chapter
6100 Dutchmans Lane, Ste. 401
Louisville, KY 40205
Contact: DeeAnna Esslinger, VP, Development and Community Relations
Phone: (502) 451-4266
Website: www.alz.org

American Cancer Society
701 W. Muhammad Ali Blvd.
Louisville, KY 40203
Contact: Eric Evans, Grassroots Manager
Phone: (502) 560-6031
Website: www.cancer.org

American Heart Association
240 Whittington Parkway
Louisville, KY 40222
Contact: Kathy Renbarger, Metro VP
Phone: (502) 371-6006
Website: www.heart.org

American Red Cross
P.O. Box 1675
Louisville, KY 40201
Contact: Brian Quail, CEO
Phone: (502) 589-4450
Website: www.louisville-redcross.org
Blood services, CPR, first aid.

Colon Cancer Prevention Project
115 S. Ewing Ave
Louisville, KY 40206
Contact: Angela Champion, Executive Director
Phone: (502) 290-0288
Website: www.coloncancerpreventionproject.org

Commonwealth of Kentucky Office of Health Policy
275 E. Main Street, 3 W-E
Frankfort, KY 40621
Contact: Chandra Venetozzi, Health Data Administrator
Phone: (502) 546-0592
Website: chfs.ky.gov

Community Health Charities of Kentucky
310 W. Liberty St., Ste. 604
Louisville, KY 40202
Contact: Allison Hord, Campaign Manager

Phone: (502) 214-3021
Website: www.kentucky.healthcharities.org
Raises funds on behalf of its member health agencies for medical research, public education and patient support services. Funds are raised in the workplace through payroll deduction campaigns.

DREAM Foundation, Inc.
8216 Limehouse Ln.
Louisville, KY 40220
Contact: Mitch Barnes, President
Phone: (502) 594-8245
Website: www.dream-foundation.net
Foundation building accessible playgrounds for children with disabilities; sponsors several fundraising events.

ElderServe
631 S. 28th Street
Louisville, KY 40211
Contact: Harriette Friedlander
Phone: (502) 588-5434
Website: www.elderserveinc.org
Empowers older adults to live independently with dignity.

Epilepsy Foundation of Kentuckiana
501 E. Broadway, Ste. 380
Louisville, KY 40202
Contact: Debbie McGrath, Executive Director
Phone: (502) 584-8817
Website: www.efky.org
An independent affiliate of the National Epilepsy Foundation. It operates as a charitable 501 (c) (3) non-profit organization and is devoted to serving individuals impacted by epilepsy and seizure disorders.

Foundation for a Healthy Kentucky
1600 Lyndon Farm Court, Ste. 100
Louisville, KY 40223
Contact: Susan Zepeda, President/CEO
Phone: (502) 326-2583
Website: www.healthy-ky.org
Addresses the unmet healthcare needs of Kentuckians by developing and influencing health policy, improving access to care, and promoting health equity through grants and program related investments.

Four Points Publishing
P.O. Box 36577
Louisville, KY 40233
Contact: Brent Shane
Phone: (502) 419-4373
Website: www.medpracticeguide.com
A network of experienced healthcare and related professionals that provides ready-to-use tips and information.

Greater Louisville Aging in Place Alliance

657 S. Hurstbourne Parkway, Ste. 325
Louisville, KY 40222
Contact: Michelle Maxim, President
Phone: (502) 384-4357
Website: www.glaipa.org

Greater Louisville Inc.

614 W. Main Street, Ste. 6000
Louisville, KY 40202
Contact: Kent Oyler
Phone: (502) 876-8357
Website: www.greaterlouisville.com
As the metro chamber of commerce, GLI leads initiatives that impact the success of our members and contribute to the prosperity of our entire region including health-related economic and workforce development and entrepreneurial resources.

Louisville, KY 40202
Contact: Lelan Woodmansee,
Executive Director
Phone: (502) 736-6302
Website: www.glms.org
Promotes the science, art and profession of medicine;-Protects the integrity of the physician-patient relationship.

Health Information Management Systems Society (HIMSS)

4002 St. Ives Ct.
Louisville, KY 40207
Contact: Joe DeVenuto
Phone: (502) 876-5343
Website: www.bluegrasshimss.org

Health & Service Professionals Network
219 W. Ormsby Avenue
Louisville, KY 40203
Contact: Zandra Lyons, Executive Director
Website: www.hspntwrkonaging.com

Health Care Excel of Kentucky
1941 Bishop Lane
Louisville, KY 40218
Contact: Sharon Smith, CEO
Phone: (502) 454-5112
Website: www.hce.org
Evaluates health-care quality, clinical appropriateness, and outcome assessments and designs customized management solutions and appropriate educational programs to significantly improve the delivery of health services.

Institute for the Future

Contact: Dawn Alva
Phone: (650) 854-6322
Website: www.iftf.org
A nonprofit research group whose core work is identifying trends and discontinuities that will transform global society and the global marketplace, providing insights into business strategy, design process, innovation and social dilemmas.

iTRC - Information Tech Resource
University of Louisville, Shelby Campus
Louisville, KY 40292
Contact: James Graham, Director
Phone: (502) 852-0902
A business incubator for emerging technology ventures.

KentuckianaWorks
410 W. Chestnut Street, Ste. 200
Louisville, KY 40202
Contact: Michael Gritton, Executive Director
Phone: (502) 574-2500
Website: www.kentuckianaworks.org
Workforce investment board.

Kentucky Association of Health Care Facilities
9403 Mill Brook Road
Louisville, KY 40223
Contact: Ruby Jo Cummins-Lubarsky, President
Website: www.kahcf.org

Kentucky Association of Regional Programs
152 W. Zanedale Drive
Lexington, KY 40503
Contact: Steve Shannon, Executive Director
Phone: (859) 272-6700
Website: www.karponline.org

Kentucky BioAlliance
1303 US Highway 127 South
Frankfort, KY 40601
Contact: Ben Keeton
Phone: (502) 561-1240
Website: www.kentuckybioalliance.org

Kentucky Board of Nursing
312 Whittington Parkway, Ste. 300
Louisville, KY 40222
Contact: Charlotte Reed, Executive Director
Phone: (502) 814-4633
Website: www.kbn.ky.gov

Kentucky Cabinet for Economic Development, Department of Commercialization & Innovation
300 W. Broadway
Frankfort, KY 40601
Contact: Deborah Clayton, Commissioner
Phone: (502) 564-7670
Website: www.thinkkentucky.com

Kentucky Cabinet for Health & Family Services
275 E. Main Street
Frankfort, KY 40621
Contact: Janie Miller, Cabinet Secretary
Phone: (502) 564-7042
Website: www.chfs.ky.gov

Kentucky Cancer Consortium
2365 Harrodsburg Road, Ste. B 100
Lexington, KY 40504
Contact: Katie Bathje, Program Coordinator
Phone: (859) 219-0772
Website: www.kycancerc.org

Kentucky Chamber of Commerce
464 Chenault Road
Frankfort, KY 40601
Contact: David Adkisson, President/CEO
Phone: (502) 695-4700
Website: www.kychamber.com

Kentucky Health Justice Network
PO Box 4761
Louisville, KY 40204
Contact: Kendell Nash, State Director
Phone: (502) 594-5178
Website: www.kentuckyhealthjusticenetwork.org

Kentucky Health Policy Institute
3505 Winterberry Circle
Louisville, KY 40207
Contact: Peter Hasselbacker
Phone: (502) 802-5092
Website: www.khpi.org

Kentucky Heart Foundation
King's Daughter's Medical Center Mobile Clinic
706 15th Street
Ashland, KY 41101
Contact: Regina Stout, Executive Director
Phone: (606) 324-1544
Website: www.kyheartfoundation.com

Kentucky Hospital Association
2501 Nelson Miller Parkway
Louisville, KY 40223
Contact: Michael Rust, President & CEO
Phone: (502) 426-6220
Website: www.kyha.com
Insurance Company (med mal) and trade ass'n for hospitals.

Kentucky Medical Association
4965 U.S. Highway 42, Ste. 2000
Louisville, KY 40222
Contact: Kristin Sutton
Phone: (502) 426-6200
Website: www.kyma.org
Medical Practice advocacy and support.

Kentucky Organ Donor Affiliates
106 E. Broadway
Louisville, KY 40202
Contact: Paul O'Flynn, Executive Director
Phone: (502) 581-9511
Website: www.kyorgandonor.org

Kentucky Primary Care Association
226 W. Main Street
Frankfort, KY 40601
Contact: Joseph Smith, Executive Director
Phone: (502) 227-4379
Website: www.kypca.net

Kentucky Psychological Association
120 Sears Avenue, Ste. 202
Louisville, KY 40207
Contact: Leslie Proasi, Executive Director
Phone: (502) 894-0777
Website: www.kpa.org

Kentucky Public Health Association
1636 Bellows Mill Rd
Harrodsburg, KY 40330
Contact: Garland VanZant, Board Member
Phone: (859) 612-9008
Website: www.kpha-ky.org

Kentucky Science & Technology Corporation
200 W. Vine Street, Ste. 420
Lexington, KY 40507
Contact: Mahendra Jain, Executive Director
Phone: (859) 233-3502
Website: www.kstc.com

Kentucky Society of Healthcare Engineers
9462 Brownsboro Road, #158
Louisville, KY 40241
Contact: Kurt Gessner, CHE
Phone: (800) 493-1117
Website: www.kshe.org

Kentucky Voices for Health
120 Sears Ave., Ste. 212
Louisville, KY 40207
Contact: Jodi Mitchell, Executive Director
Phone: (502) 894-0222
Website: www.kyvoicesforhealth.org
Coalition of concerned Kentuckians who believe that the best health care solutions are found when everyone works together to build them.

Kentucky Youth Advocates
11001 Bluegrass Pkwy., Ste. 100
Jeffersontown, KY 40299
Contact: Andrea Plummer, M.S.W.
Website: www.kyyouth.org

KET
620 W. Main Street, Ste. 125
Louisville, KY 40202
Contact: Julie Schmidt, Director, Louisville Operations
Phone: (502)-589-3538
Website: www.ket.org

KIPDA
11520 Commonwealth Drive
Louisville, KY 40299
Contact: Sue Johnson, Health Promotion Planner
Phone: (502) 266-5571
Website: www.kipda.org

Kosair Charities
982 Eastern Parkway
Louisville, KY 40233
Contact: Randy Coe, President
Website: kosair.org
Helps children receive the medical care they need to be able to walk, run, and dance.

Leadership Kentucky
464 Chenault Road
Frankfort, KY 40601
Contact: Diana Ratliff, President/Executive Director
Phone: (502) 695-1102
Website: www.leadershipky.org
Brings together a selected group of people that possess a broad variety of leadership abilities, career accomplishments, & volunteer activities to gain insight into complex issues facing the state.

Lexington-Fayette County Health Department
805 Newton Circle
Lexington, KY 40511
Contact: Marilyn Peterson, RN, BSN
Phone: (859) 288-2483
Website: www.lexingtonhealthdepartment.org

Louisville Comprehensive Care MS Center
250 E. Liberty Street, Ste. 800
Louisville, KY 40202
Contact: Yvette Rojas, Executive Director
Phone: (502) 569-4183
Website: www.loumscenter.com
Dedicated to enhancing the quality of life of people living with Multiple Sclerosis through advocacy, support and education.

Louisville Metro Department of Public Health and Wellness
400 E. Gray Street
Louisville, KY 40202
Contact: Wendy Carlin, MS, RD
Phone: (502) 574-6281
Website: www.louisvilleky.gov

Louisville Metro Government
601 W. Jefferson Street
Louisville, KY 40202
Phone: (502) 574-5000
Website: www.louisvilleky.gov

Louisville-Kentucky Business Coalition on Health
2229 Millvale Road
Louisville, KY 40205
Contact: Paul Shaughnessy, President
Phone: (502) 458-3676

National Foundation to Support Cell Transplant Research, Inc.
333 E. Main Street, Ste. 304
Louisville, KY 40202
Contact: Paula Grisanti, Chair
Website: www.nfctr.org

NCHN (National Cooperative of Health Networks Association)
400 S. Main Street
Hardinsburg, KY 40143
Contact: Rebecca Davis, Executive Director
Phone: (270) 925-5611
Website: www.nchn.org
A national association of health networks and strategic partners. Our mission is to support and strengthen health alliances through collaboration, networking, leadership development, and education.

Neighborhood House
201 North 25th Street
Louisville, KY 40212
Contact: Pam Rice, Executive Director
Phone: (502) 774-2322
Website: www.nhky.org
A community-based organization that provides individuals with opportunities to enhance the quality of their lives.

New Hope Services
725 Wall Street
Jeffersonville, IN 47130
Contact: Jim Bosley, President & CEO
Phone: (812) 288-8248
Website: www.newhopeservices.org
Provides vocational training & placement services, day services & residential care management & placement for individuals, with developmental delays.

Mayor's Healthy Hometown
400 E. Gray Street
Louisville, KY 40202
Phone: (502) 574-6520
Website: www.louisvilleky.gov/government/mayors-healthy-hometown-movement
Measuring health outcomes in Louisville.

Medical Resources Group
6006 Brownsboro Park Boulevard
Louisville, KY 40207
Contact: Christian Trae
Phone: (502) 523-0636

Website: www.medicalresourcesgroup.com
Assists medical and dental practices in accounting, office management, financial planning, etc., in Louisville and New Albany.

Office of Technology Transfer
201 E. Jefferson St., Ste. 215
Louisville, KY 40202
Contact: Kathy Behr
Phone: (502) 852-5417
Website: www.louisville.edu/thinker
University of Louisville office providing support for the development of new ways of knowledge transfer.

One Southern Indiana
4100 Charlestown Road
New Albany, IN 47150
Contact: Danny James
Phone: (812) 945-0266
Website: www.1si.org

Partnership for a Fit Kentucky
275 E. Main Street, 4W-E
Frankfort, KY 40621
Contact: Anita Courtney, Public Health Consultant
Phone: (502) 564-3827
Website: www.fitky.org

Pikeville Medical Development Corp.
911 Bypass Rd
Pikeville, KY 41501
Contact: Jerry Johnson, CEO
Phone: (502) 423-9905
Website: www.pmdc.us
535,000 square foot medical treatment facility and teaching hospital in eastern Kentucky.

Prevent Blindness America - Kentucky Division
PO Box 436113
Louisville, KY 40253
Contact: LuAnn Epperson, President/CEO
Phone: (502) 254-4973
Website: www.preventblindness.org

Ronald McDonald House Charities of Kentuckiana
550 S. 1st. Street
Louisville, KY 40202
Contact: Sara Silletto, Director of Development
Phone: (502) 581-1416
Website: www.rmhc-kentuckiana.org

Spina Bifida Association of Kentucky
Kosair Charities Centre
982 Eastern Parkway, Box 18
Louisville, KY 40217
Contact: Patty Dissell, Executive Director
Phone: (502) 637-7363
Website: www.sbak.org

A non-profit organization and a state chapter of the national organization Spina Bifida Association providing services for children & adults with spina bifida, their families.

The Center for Women and Families
927 S. 2nd Street
Louisville, KY 40202
Contact: Marta Miranda, President/CEO
Phone: (502) 581-7253
Website: www.thecenteronline.org

The Healing Place
1020 W. Market Street
Louisville, KY 40202
Contact: Karyn Hascal, VP, Mission Advancement
Phone: (502) 585-4848
Website: www.thehealingplace.org
Supplies social support and medical assistance to the homeless, the hungry, and the addicted.

The Humana Foundation
500 W. Main Street, Ste. 208
Louisville, KY 40202
Contact: Virginia Judd, Executive Director
Phone: (502) 580-3041
Website: www.humanafoundation.org
The Philanthropic arm of Humana Inc.

The Kentucky Psychiatric Medical Association
649 Charity Court, Ste. 13
Frankfort, KY 40601
Contact: Bonnie Cook, Executive Director
Phone: (502) 695-4843
Website: www.kypsych.org

The Leukemia & Lymphoma Society
600 E. Main Street, Ste. 102
Louisville, KY 40202
Contact: Karyl Ferman, Executive Director
Phone: (502) 584-8490
Website: www.lls.org/ky
The world's largest voluntary health organization dedicated to funding blood cancer research & providing education & patient services.

The Physician's Network (TPN)
2301 River Road, Ste. 302
Louisville, KY 40206
Contact: Vickie Hall, Provider Relations Rep
Phone: (502) 814-3161

United Way of the Bluegrass
2480 Fortune Drive
Lexington, KY 40509
Contact: John Parker, VP of Community Building
Phone: (859) 233-4461
Website: www.uwbg.org

University of Louisville Foundation
University of Louisville
Office of Advancement
Louisville, KY 40292
Contact: Joseph Beyel, VP Office of University
Phone: (502) 852-7768
Website: www.php.louisville.edu/advancement
The charitable arm of the University of Louisville.

Valeo Communications
268 St. Matthews Avenue
Louisville, KY 40207
Contact: Eric Gunderson, CEO
Phone: (502) 558-1717
Website: www.valeocommunications.com
Marketing strategy firm dedicated to building connections between doctors and businesses serving the medical community.

Wellspring
PO Box 1927
Louisville, KY 40201
Contact: Stephen Perkins, Executive Director
Phone: (502) 637-4361
Website: www.wellspring-house.org
Annually promotes the recovery of over 380 persons with psychiatric disabilities by providing a range of supportive housing options coupled with rehabilitative services.

World Trade Center of Kentucky

224 S. 2nd Street
Louisville, KY 40202
Contact: Edwin Webb
Phone: (502) 574-2400
Website: www.wtcky.org

YMCA of Greater Louisville
545 S. 2nd Street
Louisville, KY 40202
Contact: Freddy Garcia, Site Director
Phone: (502) 582-3615
Website: www.ymcalouisville.org

Young Professionals Association of Louisville
550 S. 4th Street, Ste. 200
Louisville, KY 40202
Contact: Emma Brown
Phone: (502) 719-0012
Website: www.ypal.org

Attorney Firms

Bingham Greenebaum Doll PLLC

101 S. 5th Street, 3500 National City Tower
Louisville, KY 40202
Contact: Eric Ison

Phone: (502) 587-3564
Website: www.bgdlegal.com
A full service business law firm consisting of approximately 180 attorneys practicing from offices in Louisville, Lexington, Frankfort & Covington, Kentucky; Cincinnati, Ohio; Nashville, Tennessee; & Atlanta, Georgia.

Dinsmore & Shohl, LLP

101 S. 5th Street, Ste. 2500
Louisville, KY 40202
Contact: Frank Doheny Jr.
Phone: (502) 540-2300
Website: www.dinsmore.com

Dressman Benzinger LaVelle, PSC

321 W. Main Street, Ste. 2100
Louisville, KY 40202
Contact: Matthew Klein
Phone: (859) 426-2109
Website: www.dblaw.com

Frost Brown Todd LLC

400 W. Market Street, 32nd Floor
Louisville, KY 40202
Contact: Joseph Ardery
Phone: (502) 568-0272
Website: www.frostbrowntodd.com
Full-service law firm with offices in Kentucky, Indiana, Ohio and Tennessee.

Fultz Maddox Dickens PLC

101 S. 5th Street, Ste. 2700
Louisville, KY 40202
Contact: Daniel Fisher
Phone: (502) 588-2000
Website: www.fmdlegal.com

Attorney firm focusing on commercial litigation for businesses and individuals nationwide, constitutional and public interest litigation, employment matters, personal injury litigation for plaintiffs and defendants, and healthcare litigation and business counseling.

Grossman & Moore, PLLC

401 W. Main Street, Ste. 1810
Louisville, KY 40202
Contact: Colleen Clemons
Phone: (502) 657-7100
Website: www.gminjurylaw.com

Gwin Steinmetz & Baird PLLC

401 W. Main Street, Ste. 1000
Louisville, KY 40202
Contact: W. Bruce Baird
Phone: (502) 618-5700
Website: www.gsblegal.com

Hall Render Killian Heath & Lyman, PSC

614 W. Main Street, Ste. 4000

Contact: Rene Savarise
Phone: (502) 568-1890
Website: www.hallrender.com
Law firm, headquartered in Indianapolis, with offices in Kentucky, Michigan and Wisconsin that focus on health law.

Jane D. Lollis, Attorney at Law
101 N. 7th St.
The Normandy Building, Ste. 506
Louisville, KY 40202
Contact: Jane Lollis
Phone: (502) 561-3483

McBrayer, McGinnis, Leslie & Kirkland, PLLC
9300 Shelbyville, Rd., Ste. 210
Louisville, KY 40222
Contact: Christopher Richardson
Phone: (502) 327-5400
Website: www.mmlk.com
Provides solid solutions and powerful advocacy for complex legal problems.

Middleton Reutlinger
4965 U.S. 42
Louisville, KY 40222
Contact: William Oldham
Phone: (502) 584-1135
Website: www.middletonlaw.com

Reed Weitkamp Schell & Vice PLLC
500 W. Jefferson Street, Ste. 2400
Louisville, KY 40202
Contact: Ivan Schell
Phone: (502) 589-1000
Website: www.rwsvlaw.com

Reis Sources, LLC
503 Country Lane
Louisville, KY 40207
Contact: Kay Reis
Phone: (502) 895-3450
Website: www.reissources.com
Human resources law and management consulting. Assists companies in all areas of human resources functions, compliance and training.

Stites & Harbison PLLC

400 W. Market Street, Ste. 1800
Louisville, KY 40202
Contact: Jennifer Elliot
Phone: (502) 681-0417
Website: www.stites.com
Law firm with offices in Kentucky, Indiana, Tennessee, Georgia, Virginia and Washington, D.C.

Stoll, Keenon, Ogden

500 W. Jefferson Street, 2000 PNC Plaza
Louisville, KY 40202
Contact: Stephen Houston

Phone: (502) 568-5768
Website: www.skofirm.com

Tachau Meek PLC
101 S. 5th Street, Ste. 3600
Louisville, KY 40202
Contact: Katherine McKune
Phone: (502) 625-1827
Website: www.tachaulaw.com
A commercial litigation firm of zealous advocates and trusted counselors, dedicated to exemplary client service and outstanding results.

Thompson Miller & Simpson PLC
734 W. Main Street, Ste. 400
Louisville, KY 40202
Contact: Heather Cash
Phone: (502) 585-9900
Website: www.tmslawplc.com

Weber & Rose, PSC
471 W. Main St, Ste. 400
Louisville, KY 40202
Contact: Darryl Durham
Phone: (502) 589-2200
Website: www.weberandrose.com
Full-service law firm that provides legal services to the healthcare and business communities of Kentucky and Southern Indiana.

Woodward Hobson & Fulton LLP
101 S. 5th Street, Ste. 2500
Louisville, KY 40202
Contact: Robert L. Hallenberg
Phone: (502) 581-8109
Website: www.dinslaw.com

Wyatt, Tarrant & Combs, LLP

500 W. Jefferson Street, Ste. 2800
Louisville, KY 40202
Contact: Kathie McDonald-McClure
Phone: (502) 562-7526
Website: www.wyattfirm.com
Law Firm operating in Kentucky, Tennessee, Indiana, Mississippi and Colorado.

Banks and Investors

Achieve CCA, Inc.
101 NW. 1st Street, Ste. 201
Evansville, IN 47708
Contact: John Desmarais, VP, Business Development
Phone: 502-766-2870
Website: www.achievecce.com
Debt management company focusing on healthcare. Achieve CCA, Inc. assists healthcare organizations in their revenue cycle by offering debt management

plans which address the "whole financial health" of the patient.

ARGI Financial Group
1914 Stanley Gault Parkway
Louisville, KY 40223
Contact: Kevin Lynch
Phone: (502) 753-0609
Website: www.argifinancialgroup.com

Armstrong Financial Strategies Group of Wells Fargo Advisors

101 S. 5th Street, Ste. 3800
Louisville, KY 40202
Contact: John Jameson
Phone: (502) 561-5068
Website: www.armstrongfinancialstrategiesgroup.com

Arsenal Investment and Advisors LLC
400 W. Market Street, Ste. 2200
Louisville, KY 40202
Contact: Jeffrey Sexton, Founder
Website: www.arsenal.pro

BB&T Insurance Services, Inc.
2600 Eastpoint Parkway
Louisville, KY 40223
Contact: Shari House
Phone: 502-489-5932
Website: <http://www.bbandt.com>
Bank.

BF Capital
333 E. Main Street, Ste. 310
Louisville, KY 40202
Contact: Dale Boden, President
Phone: (502) 587-1860

Blue Equity, LLC
333 E. Main Street, Ste. 200
Louisville, KY 40202
Contact: Jonathan Blue, President
Phone: (502) 589-8181
Website: www.blueequity.com
Blue Equity, LLC is an independent, private equity firm committed to actively investing both growth capital and business expertise in enterprises with solid development potential.

CapitalSouth Partners
2207 Ardsley Road
Louisville, KY 40207
Contact: Ken Berryman, Director, Louisville Office
Website: www.capitalsouthpartners.com

Chrysalis Ventures, LLC
101 S. Fifth Street, 1650 National City Tower
Louisville, KY 40202

Contact: David A. Jones, Jr., Chairman
Phone: (502) 583-7644
Website: www.chrysalisventures.com
Chrysalis Ventures is an early and growth-stage venture capital firm investing primarily in healthcare and technology companies in the Midwest and South.

Citizens Union Bank
11601 Bluegrass Pkwy
Louisville, KY 40229
Contact: Debbie Prewitt, VP
Phone: 502-264-3537
Website: www.cubbank.com

Commonwealth Bank & Trust Company
400 W. Market Street
Louisville, KY 40202
Contact: Pamela Duffy, VP
Phone: (502) 259-2020
Website: www.cbandt.com

Fifth Third Bank
401 S. Fourth Avenue, 7th Floor
Louisville, KY 40202
Contact: Rich Whipple, Vice President, Relationship Manager, HealthCare Group
Phone: (502) 562-5337
Website: www.53.com
A diversified financial services company headquartered in Cincinnati, Ohio.

Hilliard Lyons
500 W. Jefferson Street, Ste. 700
Louisville, KY 40202
Contact: Andrew McKay
Phone: Financial and accounting consulting firm.
Website: www.hilliard.com
M&A, financial advisory and investment banking services.

Kentucky Seed Capital / Triathlon Medical Venture
222 S. First Street, Ste. 200
Louisville, KY 40202
Contact: George Emont, Managing Partner
Phone: (502) 410-1652
Website: www.kyseed.com
Venture fund providing seed capital for Kentucky and Louisville-area life-sciences companies

L & N Federal Credit Union
9203 Smyrna Parkway
Louisville, KY 40229
Contact: Jacqueline Pennington, Director of Communications
Phone: (502) 315-5387
Website: www.lnfcu.com

Merrill Lynch
101 Bullitt Lane
Oxmoor Place, Ste. 400

Louisville, KY 40222
Contact: Thomas Hirsch, Managing Director
Website: www.ml.com

Meyerowitz & King, PLLC
9710 Park Plaza Ave, Ste. 208
Louisville, KY 40241
Contact: Steve King
Phone: (502) 587-9833
Website: www.thelouisvilleoffice.com

National City
329 Whittington Parkway
Louisville, KY 40222
Contact: Chuck Denny, President & CEO
Phone: (502) 581-4200
Website: <http://www.national-city.com>
Cleveland-based financial holding company with assets over \$100 billion.

PNC Bank
500 W. Jefferson Street, PNC Plaza
Louisville, KY 40202
Contact: Patti Robertson, Senior VP
Phone: (502) 581-7440
Website: www.pnc.com

Raymond James & Associates
400 W. Market Street, Ste. 2100
Louisville, KY 40202
Contact: John O'Connor, Sr. VP
Website: www.raymondjames.com

Republic Bank & Trust Company
3950 Kresge Way
Louisville, KY 40207
Contact: Barbara Cutter, VP, Preferred Client Services
Phone: 502-420-1843
Website: www.republicbank.com
Locally owned bank, headquartered in Louisville, Kentucky with assets of \$3 billion.

River Hill Capital, LLC
2904 Eastpoint Parkway
Louisville, KY 40223
Contact: Jim Lintner, President
Phone: 502-326-4922
Website: www.riverhillcapital.com
Financial advisory services.

Targeted Retirement Strategies, LLC
5601 Coral Berry Place
Crestwood, KY 40014
Contact: Lauchlin Hines
Phone: (502) 241-0985
Website: www.targetretire.com
Independent financial management and advice for retirees, business owners and individuals wanting a retirement income plan.

UBS Financial Services Inc.
4801 Olympia Park Plaza, Ste. 4000
Louisville, KY 40241
Contact: Jason Beem, First Vice President
Phone: (502) 420-7699
Website: www.ubs.com

US Bank
One Financial Square
Louisville, KY 40202
Contact: Janet Reilly, Sr. VP
Phone: (502) 562-6336
Website: www.usbank.com

Clinical Services, Outpatient Management and Physician Practices

21st Century Oncology
4500 Churchman Avenue, Ste. 100
Louisville, KY 40215
Contact: Lynn Bentliff, Vice President of Operations
Phone: 856-424-0003
Website: www.21stcenturyoncology.com
Premier provider of cancer care services.

3DR Laboratories
Contact: Robert Faulk, CMO
Phone: (502) 569-1025
Website: www.3drinc.com
Headquartered in Louisville, Kentucky, 3DR Laboratories is a privately held company delivering 24/7 access to highly-trained radiation technologists with the capacity to perform 3D medical image post-processing.

Almost Family
9510 Ormsby Station Road, #300
Louisville, KY 40223
Contact: Steve Guenther, CFO
Phone: (502) 891-1042
Website: www.patientcare.com
Home health care services.

Alternative Health Care Adult Day Center
147 Wilma Avenue
Louisville, KY 40299
Contact: Leah Smith
Phone: (502) 955-1750
Website: www.alternativehc.org

American Family Orthodontics, Inc.
9505 Williamsburg Plaza, Ste. 301
Louisville, KY 40222
Contact: Timothy Hoagland, CFO

Phone: (502) 423-9111
Website: www.afo-braces.com
Medical & dental business consultants.

Brooklawn Child & Family Services
3121 Brooklawn Campus Dr.
Louisville, KY 40218
Contact: Mary-Kate Poling, President/CEO
Phone: (502) 515-0420
Website: www.uspiritus.org

Business Health Plus
Clarksville Medical Pavilion
1615 Blackiston View Dr.
Clarksville, IN 47129
Contact: Jackie Brannon
Phone: (812) 282-4037
Website: www.businesshealthplus.com

Camelot Healthcare Specialty Center
1101 Lyndon Lane
Louisville, KY 40222
Contact: Ben Bayes, Administrator
Phone: (502) 425-0031

Center for Orthotic and Prosthetic Care
Corporate Member
982 Eastern Parkway
Louisville, KY 40217
Contact: Keith Senn, COO
Phone: (502) 637-7717
Website: www.centeropcare.com
Orthotics and prosthetics.

Center for Spinal Care
5920 Timber Ridge Dr., Ste. 101
Prospect, KY 40059
Contact: Carol Ward
Phone: (502) 228-7890

ConfiCare Home Health Solutions, LLC
1515 Ormsby Station Court
Louisville, KY 40223
Contact: Rob Bush, President
Phone: (502) 315-1724
Website: www.conficare.com

Cumberland Medical Laboratories
401 Bogle Street
Somerset, KY 42503
Contact: Marilyn McMillen

CyberKnife Associates of Louisville, LLC
2450 National City Tower
Louisville, KY 40202
Contact: Bobby Baker, CEO
Website: www.cyberknifeoflouisville.com

Delta Direct Staffing
5338 S. Third Street, Ste. 104
Louisville, KY 40214
Contact: Sandy Woods, President
Website: www.deltadirectstaffing.com

Dupont / Northeast Highfield Open MRI
3901 Dutchmans Lane #101
Louisville, KY 40207
Contact: Audrey Catlett, Regional Sales Manager
Phone: (502) 896-2120

East Louisville Pediatrics
4171 Westport Rd
Louisville, KY 40207
Contact: Julie Breedlove
Phone: (502) 896-8868
Website: www.eastlouisvillepediatrics.com

Eldercare4families
13806 Lake Point Circle #201
Louisville, KY 40223
Contact: Rita Pate, Owner
Phone: (502) 244-8116
Website: www.eldercare4families.com

Family & Children's Place
2303 River Road
Louisville, KY 40206
Contact: Pam Helms, M.A.
Phone: (502) 893-3900
Website: www.familyandchildrensplace.org

Family Allergy & Asthma
Corporate Member
9800 Shelbyville Road, Ste. 220
Louisville, KY 40223
Contact: Mary Abell, Director, PR/Communications
Phone: (502) 429-8585
Website: www.familyallergy.com
A multi-site allergy practice with offices in Kentucky and Southern Indiana.

Family Health Centers, Inc.
Corporate Member
2215 Portland Ave.
Louisville, KY 40212
Contact: William Wagner, Executive Director
Phone: (502) 778-4201
Website: www.fhclouisville.org

Gaddie Eye Center
7635 Shelbyville Rd.
Louisville, KY 40222
Contact: Ben Gaddie
Phone: (502) 423-8500
Website: www.gaddieeye.com

Global Caregivers
6304 Walnut Ridge Trail
Prospect, KY 40059
Contact: Rita Grafchik
Phone: (502) 523-1726
Website: www.myglobalcaregivers.com

Healthsouth Surgery Center of Louisville
614 E. Chestnut Street
Louisville, KY 40202
Contact: Vanessa McDermott
Phone: (502) 589-9488
Website: www.healthsouth.com

HEAR in Kentucky
7132 Preston Highway
Louisville, KY 40219
Contact: Brian Beams
Phone: (502) 961-9560
Website: www.hearinkentucky.com

Home Instead Senior Care
1512 Crums Lane, Ste. 103
Louisville, KY 40216
Contact: Colette Hofelich, RN
Phone: (502) 448-1511
Website: www.homeinstead.com
Home care medical service provider.

Inspire Medical, Inc.
2323 Lime Kiln Lane
Louisville, KY 40222
Contact: Molly Jones, CEO
Phone: (502) 339-8000
Website: www.inspiremedical.com
Specializes in emergency department management and staffing for Kentucky's rural hospitals. Inspire's approach is unique to each hospital client through comprehensive programs and customized planning to meet specific needs.

Integrity Healthcare Services
11403 Bluegrass Pkwy, Ste. 400
Louisville, KY 40299
Contact: Chip McNamara
Phone: (502) 266-0123
Website: www.integrityhealthservices.com

Interim Healthcare
PO Box 24204
Louisville, KY 40224-0204
Contact: Mike Mirgeaux, President
Phone: (502) 897-2255
Website: www.interimhealthcare.com

JenCARE
2406 W. Broadway
Louisville, KY 40211
Contact: Belinda Setters, MD

Phone: (502) 775-1211
Website: www.jencaremed.com

Kaplan Barron Pediatric Group
3333 Bardstown Road
Louisville, KY 40218
Contact: John B. Roth, MD
Phone: (502) 452-6337
Website: www.kaplanbarron.com
Pediatric medicine.

Kentuckiana Ear Nose & Throat
225 Abraham Flexner Way, Ste. 401
Louisville, KY 40202
Contact: Bruce Scott, Director
Phone: (502) 583-9425
Website: www.yourentmd.com
Physician office.

Kentuckiana Center for Better Bone & Joint Health
100 E. Liberty Street
Louisville, KY 40202
Contact: Steven Stern, MD
Phone: (502) 583-5836

Kentucky Orthopedic Rehab Team
13201 Magisterial Drive
Louisville, KY 40223
Contact: Laurie Ray, COO
Phone: (502) 244-6770
Website: www.kort.com
Private practice physical therapy group specializing in orthopedics, sports and industrial medicine.

Kleinert Kutz Hand Care Center
225 Abraham Flexner Way, Ste. 700
Louisville, KY 40202
Contact: Joe Kutz, Partner
Phone: (502) 561-4263
Website: www.kleinertkutz.com
Orthopedic, general and plastic surgery and provide comprehensive care for the hand, wrist and arm.

Korrek Optical
4036 Dutchman's Lane
Louisville, KY 40207
Contact: Richard Klienmar
Phone: (502) 895-2020
Website: www.korrek.com

Laboratory Corporation of America
4500 Conaem Drive
Louisville, KY 40213
Contact: Woodrow Cook
Phone: (502) 456-4700
Website: www.labcorp.com

Life Line Screening
130 Fairfax Ave., Ste. 100
Louisville, KY 40207
Contact: Kenneth Blum, President
Phone: (502) 894-9228
Website: www.lifelinescreening.com
Mobile vascular screening services.

LifeNet AirMedical Services
975 Riverbend Road, Ste. B
Frankfort, KY 40601
Contact: Charlotte Short, Human Resources
Phone: (502) 223-3095
Website: www.lifenetems.org

Lifescan of Louisville
4046 Dutchmans Lane
Louisville, KY 40207
Contact: Robert Scott Jones, President
Phone: (502) 893-7145
Website: www.lifescanlouisville.com
Manufactures blood glucose monitoring systems.

L-Marc Research Center
3288 Illinois Ave.
Louisville, KY 40213
Contact: Brian Dawson, Site Manager
Phone: (502) 515-5672
Website: www.lmarc.com

Louisville Cardiology Medical Group
1023 New Moody Lane
La Grange, KY 40031
Contact: Michael Imburgia, Physician
Phone: (502) 222-8540
Website: www.louisvillecardiology.com

Louisville Oncology (Norton Cancer Institute)
234 E. Gray Street, Ste. 164
Louisville, KY 40202
Contact: John Hamm, Director of Medical Research
Phone: (502) 629-2500

Maxim Healthcare Services of Louisville
9420 Bunsen Parkway, Ste. 110
Louisville, KY 40220
Contact: Brian Hubbard, President
Phone: (502) 426-4454
Website: www.maximhealthcare.com
Homecare and Staffing Services.

MD2U

140 Whittington Parkway, Ste. 100
Louisville, KY 40222
Contact: Mark Crane
Phone: (502) 327-9100
Website: www.md2u.com
In home patient care.

Medical Center Anesthesiologists, PSC
100 E. Liberty Street, Ste. 307
Louisville, KY 40202
Contact: Anne Johnson, Business Administrator
Phone: (502) 584-0166
Serves as the anesthesia team at Jewish Hospital in Louisville, KY.

Medical Center Cardiologists
225 Abraham Flexner Way
Louisville, KY 40202
Contact: Terri Kastanis, Controller
Phone: (502) 585-4321
Website: www.kycardiology.com
Cardiovascular care physician office.

Medical Transformation Center
1023 New Moody Lane, Ste. 201
LaGrange, KY 40031
Contact: Dr. Carl Paige
Phone: (859) 935-0626
Website: www.medicaltransformationcenter.com

Microbac Laboratories, Inc.
3323 Gilmore Industrial Boulevard
Louisville, KY 40213
Contact: J. Trevor Boyce, CEO
Phone: (502) 962-6400
Website: <http://www.microbac.com>
Operates one of the world's most diversified commercial testing and analytical laboratory groups.

Mindstreet
Professional Towers, Ste. 448
4010 Dupont Circle
Louisville, KY 40207
Contact: Jesse Wright, MD, PhD
Phone: (502) 893-9271
Website: www.mindstreet.com
Cognitive therapy software development.

Mody Medical Enterprises, Inc.

10414 Bluegrass Parkway
Louisville, KY 40299
Contact: Soo Mody, President

Nephrology Associates of Kentuckiana
6400 Dutchman's Lane, Ste. 250
Louisville, KY 40205
Contact: Lisa Allgood, Administrator
Phone: (502) 587-9660
Website: www.nephky.com
Renal care.

Neurosurgical Institute of Kentucky
210 E. Gray Street, Ste. 1105
Louisville, KY 40202
Contact: George Raque, Physician
Phone: (502) 583-1697

Website: www.niky.com
Physician practice.

Occupational Kinetics
13100 Magisterial Dr., Ste. 100
Louisville, KY 40223
Contact: Todd DeYoung, President MBA
Phone: (502) 245-0767
Website: www.myockn.com

Occupational Managed Care Alliance (OMCA)
2211 Greene Way
Louisville, KY 40220
Contact: William Faris, CEO
Phone: (502) 495-5040
Website: www.omca.biz
Helps employers, carriers, third-party administrators and self-funded groups manage workers' compensation claims costs.

OneMD
2425 Lime Kiln Lane
Louisville, KY 40222
Contact: Kristen Beckmann, Office Manager
Phone: (502) 899-7163
Website: www.myonemd.com
Physician practice.

On-Site Health Solutions
10605 Meeting Street
Prospect, KY 40059
Contact: Sean Rafferty, VP, Sales
Phone: (502) 426-1170
Website: www.healthyworksite.com
Occupational health - health promotion & wellness.

Paige Primary Care Center
1023 New Moody Lane
LaGrange, KY 40031
Contact: Dr. Carl Paige
Phone: (502) 593-5149
Website: www.paigeprimarycarecenter.com

Park Duvalle Community Health Center
3015 Wilson Ave
Louisville, KY 40211
Contact: Saudra Mucker, MSSW, CSW
Phone: (502) 774-4401
Website: pdchc.org

PGXL Laboratories
201 E. Jefferson St., Ste. 309
Louisville, KY 40202
Contact: Kristen Reynolds, Director of Laboratory Operations
Phone: (502) 569-1584
Website: www.pgxl.com

Physicians In Emergency Medicine
5454 Newcut Road, Ste. 5
Louisville, KY 40214
Contact: Corey Cohen, President
Phone: (502) 361-9900
Website: www.emp.com
Medical & dental business consultants.

Precision Healthcare Delivery
2301 River Road, Ste. 302
Louisville, KY 40206
Contact: Barbara Newton, Chief Operating Officer
Phone: (502) 426-9680
Website: www.phdelivery.com

Premier Home Care
11530 Electron Drive
Louisville, KY 40299
Contact: Wayne Knewasser, VP
Phone: (502) 491-5243
Website: www.premierhomecareinc.com
Home medical equipment (HME), oxygen and respiratory services.

Procarent – Yellow Ambulance of Louisville
421 Gernert Court
Louisville, KY 40217
Contact: Steve Coston, President
Phone: (502) 214-7387
Website: www.procarent.com

RC Cancer Centers of Kentuckiana
1322 Spring Street
Jeffersonville, IN 47130
Contact: Lori Smith, Clinical Navigator
Phone: (812) 285-6000
Website: www.kentuckianaradiationoncology.com

Rehabilitation Associates, PSC
220 Abraham Flexner Way, Ste. 300
Louisville, KY 40202
Contact: Margaret Fogle, Clinic Coordinator
Phone: (502) 584-3376

Retina Vitreous Resource Center
3 Audubon Plaza Drive, Ste. 240
Louisville, KY 40217
Contact: Norman Radtke, MD
Phone: (502) 636-2823
Website: www.louisvillediabaticeyedoctor.com
Provides advanced retinal care.

sanofi-aventis
1423 Baxter Ave
Louisville, KY 40204
Contact: John Bunton, Regional Account Manager
Phone: (859) 296-0747
Website: www.sanofi-aventis.com

A global and diversified healthcare leader, discovers, develops and distributes therapeutic solutions focused on patients' needs.

Seven Counties Services

101 W. Muhammad Ali Blvd.
Louisville, KY 40202

Contact: Anthony Zipple, President/CEO
Phone: (502) 589-8600

Website: www.sevendcounties.org

Plans and provides mental health, substance abuse, mental retardation and developmental disabilities services, treatment and prevention.

Sleep Medicine Specialists

3430 Newburg Road
Louisville, KY 40218

Contact: Jack Nicholson, Administrator
Phone: (502) 454-0755

Website: www.sleepmedicinespecialists.com

Accredited by the American Academy of Sleep Medicine, Sleep Medicine Specialists (SMS) is an independent sleep disorders center located in the Louisville Metro area.

Southern Homecare

4229 Bardstown Road
Louisville, KY 40218

Contact: Lorraine Walker, Director
Phone: (812) 283-9190

Website: www.clarkmemorial.org/homecare.asp

Spaid Nursing Service

1941 Bishop Lane
Louisville, KY 40218

Contact: Beth Delano, President
Phone: (502) 637-5474

Website: www.spaidnursing.com

Provides medical and non-medical care in the home or healthcare facility. Provides medical supplemental staffing.

StatCare Air Ambulance

2807 Taylorsville Road, Bowman Field
Louisville, KY 40205

Contact: Jodi Hignite
Phone: (502) 479-9100

Air medical service.

Sterling Medical Consultants, LLC

2301 River Green Circle, Ste. 300
Louisville, KY 40206

Contact: Tom Samuels, President
Phone: (502) 724-6000

Website: www.sterlingmd.com

Strives to provide superior physician practice management services, tailored to the physician's needs. We offer an extensive level of services that can be customized to any size practice, including electronic medical records.

StonyBrook MRI

9204 Taylorsville Road, Ste. 110
Louisville, KY 40299

Contact: Gabrielle Buchanan
Phone: (502) 491-1313

MRI imaging center.

The Eye Care Institute

1536 Story Ave
Louisville, KY 40206

Contact: Mark Prussian, CEO
Phone: (502) 589-1500

Website: www.EyeCareInstitute.com

Eye physicians and surgeons. Lasik laser vision corrections. Cataract, glaucoma and diabetic eye disease treatment and surgery. Family eye exams, glasses, contact lenses, botox and latisse. Official eye doctors for UofL Cardinal Athletics.

The Faris Group

2211 Greene Way
Louisville, KY 40220

Contact: William Faris, President
Phone: (502) 495-5040

Website: www.farisgroup.biz

The Kidz Club

225 N. 25th Street
Louisville, KY 40212

Contact: Lee Zimmerman, President
Phone: (502) 365-2426

Website: www.thekidzclub.com

Pediatric Medical Day Treatment Facilities.

The Mershon Company

41 Calumet Road
Louisville, KY 40207

Contact: Sherry Boone
Phone: (502) 896-4229

The MultiCare Centre for Integrative Medicine

6000 Brownsboro Park Boulevard
Louisville, KY 40207

Contact: Bill Breuer, Director
Phone: (502) 895-7761

Website: www.multicarecentre.com

Formerly The Center for Multidisciplinary Healthcare.

The Pain Institute

252 Whittington Parkway
Louisville, KY 40222

Contact: Steven Friedman, CFO
Phone: (502) 423-7246

Website: www.thepaininstitute.com

Dedicated to the management of acute and chronic pain.

University Cardiothoracic Surgical
201 Abraham Flexner Way, Ste. 1200
Louisville, KY 40202
Contact: Lisa Motley, COO
Phone: (502) 583-8383
Website: www.louisvilleheartsurgery.com
Surgical group responsible for major advances in
cardiothoracic surgery.

University of Louisville Healthcare
550 S. Jackson Street
Louisville, KY 40202
Contact: Jim Taylor, CEO
Phone: (502) 562-4002
Website: www.uoflhealthcare.org

University of Louisville Physicians (ULP)
401 E. Chestnut Street
Louisville, KY 40202
Contact: Jonathon Arrington
Phone: (502) 588-6000
Website: www.uoflphysicians.com

University Surgical Associates PSC
320 MDR Building
511 S. Floyd
Louisville, KY 40292
Contact: John Barker, Physician
Phone: (502) 583-8303
Website: www.usalouisville.com
Medical/surgical services.

Vision First
4000 Poplar Level Road
Louisville, KY 40213
Contact: John Schmitt, CFO
Phone: (502) 459-2020
Website: www.visionfirsteyecare.com
Primary eye-care in Kentuckiana.

Yellow Enterprise Systems, Inc.
1601 S. Preston Street
Louisville, KY 40217
Contact: Steve Coston, President
Phone: (502) 214-7387
Website: www.procaent.com
Ambulance service providing conventional and
bariatric ambulances.

CPA/Accounting Firms

Anderson, Bryant, Lasky & Winslow PSC
943 S. 1st Street
Louisville, KY 40203
Contact: Margaret Anderson
Phone: (502) 584-9793
Website: www.ablw-cpas.com

BKD, LLP
600 N. Hurstbourne Parkway, Ste. 350
Louisville, KY 40222
Contact: Mary McKinley
Phone: (502) 581-0435
Website: www.bkd.com

Blue & Co., LLC, C.P.A.s
2650 Eastpoint Parkway
Louisville, KY 40223
Contact: Dale Skaggs
Phone: (502) 992-3500
Website: www.blueandco.com

Dean Dorton Ford & Allen, PSC
500 W. Jefferson Street, Ste. 1400
Louisville, KY 40202
Contact: David Richard, Director of Assurance Ser-
vices
Phone: (859) 255-2341
Website: www.ddafcpa.com
A full-service accounting and business advisory firm
providing services to clients of all sizes in a variety of
industries. In thirty years the firm has grown to be one
of the largest CPA firms based in the Commonwealth.

Deloitte
220 W. Main Street, Ste. 2100
Louisville, KY 40202
Contact: Kevin Joynt, Office Managing Director
Phone: (502) 562-2030
Website: www.deloitte.com
A big five accounting firm.

Deming, Malone, Livesay & Ostroff
9300 Shelbyville Road
Louisville, KY 40222
Contact: Jerry Hurt
Phone: (502) 425-0883
Website: www.dmllo.com

Ernst & Young
400 W. Market Street
Louisville, KY 40202
Contact: Neal Thomas, Senior Manager
Phone: (502) 585-6459
Website: www.ey.com
Professional services firm in auditing, advisory ser-
vices, tax and transactions.

Harding, Shymanski & Company PSC
545 S. 3rd Street
Louisville, KY 40202
Contact: Peter Garrison
Phone: (502) 584-4142
Website: www.hsc CPA.com

Henderman, Jessee & Company, PLLC
304 Whittington Parkway, Ste. 107
Louisville, KY 40222
Contact: Bill Jessee
Phone: (502) 425-4800
Website: www.hjccpas.com
Financial and accounting consulting firm.

Jones, Nale & Mattingly, PLC
642 S. 4th Street, Ste. 300
Louisville, KY 40202
Contact: Jon Meyer, CPA
Phone: (502) 583-0248
Website: www.jnmcpc.com
CPA/consulting firm with expertise in long term care including Medicare and Medicaid Cost Reporting, reimbursement maximization, MDS review, operations review, rehabilitation therapy review, other ancillary review, litigation support, Medicare and Medicaid appeals support, billing support, including charges, collections systems and accounts receivable analysis, CON support, consulting.

Mountjoy Chilton Medley
462 S. 4th Street, Ste. 2600
Louisville, KY 40202
Contact: Barry Pennybaker, Healthcare Services Director
Phone: (502) 882-4318
Website: www.mcmcpa.com
Accounting and general business consulting.

PricewaterhouseCoopers LLP
500 W. Main Street, Ste. 1800
Louisville, KY 40202
Contact: Nick Walker
Phone: (502) 585-7762
Website: www.pwc.com

Robinson, Hughes & Christopher, P.S.C
459 West Martin Luther King Boulevard
Danville, KY 40422
Contact: Thomas Christopher
Phone: (859) 236-6628
Website: www.rhccpas.com

Strothman & Company, PSC, CPA
1600 Waterfront Plaza
325 West Main Street
Louisville, KY 40202
Contact: Ray Strothman
Phone: (502) 585-1600
Website: www.strothman.com
CPA and advising.

Tichenor & Associates, LLP
304 Middletown Park Place
Louisville, KY 40243
Contact: William Tichenor, Managing Partner
Phone: (502) 245-0775
Website: www.tichenorassociates.com

CPA firm with extensive accounting, auditing and healthcare consulting services.

Education

ATA College
10180 Linn Station Road, Ste. A-200
Louisville, KY 40223
Contact: Donald Jones, President/CEO
Phone: (502) 371-8330
Website: www.ata.edu
College that educate and train for careers in health care.

Bellarmino University
2001 Newburg Road
Louisville, KY 40205
Contact: Sue Davis, EdD, RN, Dean, Lansing School of Nursing & Health Sciences
Phone: (502) 272-8000
Website: www.bellarmino.edu
An independent Catholic liberal arts university.

Bluegrass Community and Technical College
470 Cooper Drive
Lexington, KY 40502
Contact: Eileen Kelty, Associate Professor
Phone: (859) 246-6200
Website: www.bluegrass.kctcs.edu

Brown Mackie College, Louisville
3605 Fern Valley Rd
Louisville, KY 40219
Contact: Chasity Trzop, Director of Career Services
Phone: (502) 968-7191
Website: www.brownmackie.edu
Brown Mackie College Louisville offers programs in areas of business, legal studies, computers and healthcare.

Campbellsville University Louisville
2300 Greene Way
Louisville, KY 40220
Contact: James Gribbins, Coordinator of Admissions and Marketing
Phone: (502) 753-0264
Website: www.culouisville.com

Catalyst Learning
310 West Liberty Street, Ste. 403
Louisville, KY 40202
Contact: Lynn Fischer, Founder & CEO
Phone: (502) 584-7337
Website: www.catalystlearning.com

Daymar College
4112 Fern Valley Road
Louisville, KY 40219
Contact: Amy Whitlatch

Phone: (502) 495-1040
Website: www.daymarcollege.edu
Education.

Eastern Kentucky University
521 Lancaster Avenue
Richmond, KY 40475
Contact: Dr. John Wade, Dean/ Associate Profession
Phone: (859) 622-1405
Website: www.eku.edu

Galen College of Nursing

1031 Zorn Ave
Louisville, KY 40207
Contact: Mark Vogt, President
Phone: (502) 410-6200
Website: www.galened.com
Focused solely on nursing education with nursing colleges in
Louisville, Cincinnati, San Antonio and Tampa Bay.

Indiana University Southeast
4201 Grant Line Road
New Albany, IN 47150
Contact: Lawrence Mand, Vice Chancellor
Phone: (812) 941-2333
Website: www.ius.edu

Ivy Tech Community College
8204 Old Indiana 311
Sellersburg, IN 47172
Contact: Mike Talbert, Interim Dean
Phone: (812) 246-3301
Website: www.ivytech.edu
A public community college which serves Southern Indiana
and metropolitan Louisville.

Jefferson Community & Technical College

200 W. Broadway
Louisville, KY 40202
Contact: Tony Newberry, President/CEO
Phone: (502) 213-5333
Website: www.jefferson.kctcs.edu
Five campus locations: 2 Downtown locations,
Southwest, Shelby County, & Carrollton. We offer more than
300 associates degree, diploma & certificate
programs, including 12 healthcare majors & 8 other medical
related programs.

Jefferson County Public Schools
546 S. First Street
Louisville, KY 40202
Contact: Stefanie Bramer, Program Specialist
Phone: (502) 485-7920
Website: www.jefferson.k12.ky.us

Kentucky Council on Postsecondary Education
1024 Capital Center Drive, Ste. 320

Frankfort, KY 40601
Contact: Robert King, President
Phone: (502) 573-1555
Website: www.cpe.ky.gov
Coordinates change and improvement in Kentucky's postsec-
ondary education system as directed by the Kentucky Post-
secondary Education Improvement Act of 1997.

Kentucky Department of Education
500 Mero Street, 6th Floor CPT
Frankfort, KY 40601
Contact: Cherry Boyles, Assistant Director of Program
Standards
Phone: (502) 564-2000
Website: www.education.ky.gov

McKendree University
10168 Linn Station Road
Louisville, KY 40223
Contact: Karen Gerstner, Director, Louisville Campus
Phone: (502) 266-6696
Website: www.ky.mckendree.edu
Regionally accredited, not-for-profit, four-year college serv-
ing adult students in Kentucky, Indiana and Illinois.

National College
4205 Dixie Hwy
Shively, KY 40216
Contact: Viktoria Strunk, Assistant Campus Director
Phone: (502) 447-7634
Website: www.national-college.edu/locations.louisville-ky/

Northern Kentucky University
100 Nunn Drive
Highland Heights, KY 41099
Contact: Douglas Perry, Dean
Phone: (859) 572-5220
Website: www.nku.edu

Northern Kentucky University - College of Informatics
100 Nunn Drive
206 Applied Science and Technology
Highland Heights, KY 41099
Contact: Douglas Perry, Dean
Phone: (859) 572-5666
Website: www.informatics.nku.edu

Office of Technology Transfer
University of Louisville
J.D. Nichols Campus for Innovation and Entrepreneurship
300 E. Market Street, Ste. 300
Louisville, KY 40202
Contact: T. Allen Morris, PhD, MBA, CLP, Director
Phone: (502) 852-2965
Website: www.louisville.edu/research/technologytransfer
The Office of Technology Transfer facilitates the University's
discovery, innovation and the transfer of information to the
public sector.

Ottawa University
287 Quartermaster Court
Jeffersonville, IN 47130
Contact: Peg Gernand, Senior Enrollment Advisor
Phone: (812) 280-7271
Website: www.ottawa.edu
University with campuses in Arizona, Indiana, Kansas, and Wisconsin.

PEGASUS Training
15110 Chestnut Ridge Circle
Louisville, KY 40245
Contact: Don Carr, President
Phone: (502) 244-3996
Website: www.pegasusedu.net
Specializing in the medical field, PEGASUS Training develops custom sales and management training, team programs, client-focus, interviewing skills, presentation skills and other business skills, including facilitation of strategic planning sessions.

PHIA
4010 Dupont Circle, Ste. 418
Louisville, KY 40207
Contact: Sherry Thomas, CEO/Director of Education
Phone: (502) 473-8806
Website: www.phia.com
A national organization that credentials and provides curriculum for 6 different medical administrative positions: physician coding (CCP), hospital coding (CCP-H), audit specialist (CCP-AS), billing (CMBS), compliance (CCO) and office manager (CMPM).

Profitable People, Inc.
5724 Morrison Avenue
Louisville, KY 40214
Contact: Eric Brown
Phone: (502) 262-9904
Website: www.profitablepeopleinc.com
Consulting company focused on helping clients with business growth, performance, and customer retention.

Quorum Health Resources
11409 Willow Lane
Louisville, KY 40223
Contact: Cindy Wise
Phone: (502) 550-3212
Website: www.qhr.com

Spalding University
845 S. 3rd Street
Louisville, KY 40203
Contact: Randy Strickland, Senior VP, Academic Affairs
Phone: (502) 585-9911
Website: www.spalding.edu
Independent educational institute grounded in the Catholic tradition.

Spencerian College
4627 Dixie Highway
Louisville, KY 40216
Contact: Jan Gordon, Executive Director, COO
Phone: (502) 447-1000
Website: www.spencerian.edu
Educational institute which offers programs for high demand careers in Business and HealthCare with the options of obtaining a Certificate, Diploma or Associate Degree in 31 different programs.

Strayer University
2650 Eastpoint Pkwy, Ste. 100
Louisville, KY 40223
Contact: Deborah Harris-Sims
Phone: (888) 360-1588
Website: www.strayer.edu/louisville

Sullivan University College of Pharmacy
2100 Gardiner Lane
Louisville, KY 40205
Contact: Hieu Tran, Dean and Professor
Phone: (502) 413-8640
Website: www.sullivan.edu/pharmacy

TELANIA, Inc.
173 Sears Avenue
Louisville, KY 40207
Contact: Donatus Weobong
Phone: (877) 624-7226
Website: www.telania.com
An e-learning technology, web applications and software development company.

The Oliver Group
13500 Oliver Station Court
Louisville, KY 40245
Contact: Jeanne Ward, Marketing Communications Manager
Phone: (502) 241-2292
Website: www.olivergroup.com
Talent acquisition, development, and strategy.

University of Kentucky
Lexington, KY 40506
Phone: (859) 257-9000
Website: www.uky.edu
Education.

University of Louisville

2301 S. 3rd Street
Louisville, KY 40292
Contact: David Dunn, Executive VP, Health Affairs
Phone: (502) 852-5555
Website: www.louisville.edu
Education, research, and patient care.

University of Louisville Core Proteomics Laboratory
Donald Baxter Bldg, Rm 102
570 S. Preston Street
Louisville, KY 40202
Contact: John Klein, Director
Phone: (502) 852-0014

University of Phoenix
10400 Linn Station Road, Ste. 110
Louisville, KY 40223
Contact: Melissa Peak, Director of Corporate Development
Phone: (800) 697-8223
Website: www.phoenix.edu
University offering online and campus classes targeting working students.

Webster University
1031 Zorn Ave, Ste. 200
Louisville, KY 40207
Contact: Tammy Burke,
Phone: (502) 896-1835
Website: www.webster.edu/louisville
A private, nonprofit university with over 100 campuses in the United States, Europe and Asia that locally offers graduate degree programs in business, communications, health administration, human resources, and information technologies.

Health Insurance

AIS Benefit Concepts. LLC
215 Chenoweth Lane
Louisville, KY 40207
Contact: Michael Dees, Owner
Phone: (502) 241-3798

Altman Insurance Services
1246 S. Third Street
Louisville, KY 40203
Contact: Kate Hendon, Account Manager
Phone: (502) 637-4041
Website: www.altmanins.com

AM Warner Insurance

644 Phillips Lane
Louisville, KY 40209
Contact: Allison Harris
Phone: (502) 742-4979
Website: www.amwarnerinsurance.com

Anthem Blue Cross and Blue Shield of Kentucky

9901 Linn Station Road
Louisville, KY 40223
Contact: Deb Moessner, President & GM of Kentucky
Phone: (502) 423-6952
Website: www.anthem.com/health-insurance/home/
Health insurance and employee benefits carrier.

Arison Insurance Services, Inc.
9300 Shelbyville Road, Ste. 300
Louisville, KY 40222
Contact: Paul Anderson, VP of Sales
Phone: (502) 429-7800
Website: www.arisoninsurance.com

BB&T Insurance Services
2600 Eastpoint Parkway
Louisville, KY 40223
Contact: Shari House, Vice President
Phone: (502) 489-5900
Website: www.insurance.bbt.com

Bluegrass Family Health
9750 Ormsby Station Road
Louisville, KY 40223
Contact: Nancy Atkins, Director
Phone: (502) 425-5316
Website: www.bgfh.com
Offers HMO and PPO plan designs. Several plan designs meet the legislative requirements for establishing Health Savings Accounts, as well as other consumer directed plan designs.

Brant Hickey & Associates
The Starks Building
455 South 4th Street, Ste. 445
Louisville, KY 40202
Contact: Pam Liggett, Structured Settlement Specialist
Phone: (502) 583-2858
Website: www.branthickey.com
Partners with Health care providers to help facilitate resolution of claims vis-a-vis the utilization of structured settlements as a powerful negotiation tool.

Chapman Kelly, Inc.
100 W. Court Avenue, Ste. 106
Jeffersonville, IN 47130
Contact: Tony Schy, Partner
Phone: (812) 285-8960
Website: www.chapmankelly.com
Provides medical, dental, and pharmacy claims and dependent auditing services.

Conliffe & Hickey Insurance

1910 Bardstown Road
Louisville, KY 40205
Contact: Chris Conliffe
Phone: (502) 290-6694
Website: www.conliffehickeyinsurance.com

CoventryCares of Kentucky
9900 Corporate Campus Drive, Ste. 1000
Louisville, KY 40223
Contact: Rhonda Petr, AVP Marketing
Phone: (502) 719-8809
Website: www.coventryhealthcare.com

Delta Dental of Kentucky, Inc.
10100 Linn Station Road
Louisville, KY 40223
Contact: Steve Day, VP/Marketing
Phone: (800) 955-2030
Website: www.deltadentalky.com
Part of the national Delta Dental Plans Association, the largest dental benefits carrier in the country. We began operations in 1966 and currently serve over 500,000 members, which also makes us the oldest and largest dental benefits provider in the state.

Edgewater Medical Consulting
2005 Long Knife Court
Louisville, KY 40207
Contact: Thomas James, President
Phone: (502) 580-8929

Epic Insurance
9700 Ormsby Station Road, Ste. 200
Louisville, KY 40223
Contact: Don Thompson, President
Phone: (502) 805-3742
Website: www.epicinsurancesolutions.com

Get Smart Benefits/AFLAC
291 N. Hubbards Lane, Ste. 222
Louisville, KY 40207
Contact: Kris Wissing
Phone: (502) 500-6297
Providing companies and individuals with insurance and non-insurance products.

Healthcare Underwriters Group of Kentucky
321 Townepark Circle
Louisville, KY 40243
Contact: Steven Salman, CEO
Phone: (502) 895-0995
Website: www.hugroupinc.com
A physician owned & physician governed medical malpractice insurance company licensed & domiciled in Kentucky. It's known for its financial strength and aggressive defense of its owner insured physicians.

Humana Inc.
321 W. Main, 11th Floor
Louisville, KY 40202
Contact: Rick Remmers, VP
Phone: (502) 580-5063
Website: www.humana.com
One of the nation's largest publicly traded health benefits companies.

Kentucky Department of Insurance
215 W. Main Street
Frankfort, KY 40601
Contact: Wanda Atha, Nurse Consultant
Phone: (502) 564-3630
Website: insurance.ky.gov

Kentucky Farm Bureau
9201 Bunsen Parkway
Louisville, KY 40220
Contact: Paula Stidham, Paralegal
Phone: (502) 493-7668
Website: www.kyfb.com

Kiely, Hines and Associates Insurance Agency
6100 Dutchman's Lane, 10th Floor
Louisville, KY 40205
Contact: James Brown
Phone: (502) 893-2020
Website: www.kielyhines.com

Logan Lavelle Hunt Insurance and Wealth Management
11420 Bluegrass Parkway
Louisville, KY 40299
Contact: Steve Church, President
Phone: (502) 499-6880
Website: www.llhins.com
Independent health, life, and disability insurance agency.

Mutual of America Life Insurance Company
7300 Turfway Road, Ste. 560
Florence, KY 41042
Contact: Stephen Yards, Regional VP
Website: www.mutualofamerica.com

National Government Services
9901 Linn Station Road
Louisville, KY 40223
Contact: Glenn Rhodes, CFO
Phone: (502) 329-8725
Website: www.ngsservices.com

Neace Lukens
2305 River Road
Louisville, KY 40206
Contact: Robert Ernst, Senior VP
Phone: (502) 894-2100
Website: www.neacelukens.com

Passport Health Plan
5100 Commerce Crossings Drive
Louisville, KY 40229
Contact: Jill Joseph Bell, VP & COO
Phone: (800) 578-0603
Website: www.passporthealthplan.com
Medicaid Health Plan in Kentucky for Jefferson County and the 15 surrounding counties since 1997. The plan covers 156,000 members, 9,500 of whom are dually eligible for Medicaid and Medicare.

R.H. Clarkson Financial Service, Inc.
401 W. Main Street, Ste. 1500
Louisville, KY 40202
Contact: Mike Kaelin, President
Phone: (502) 585-8800
Website: www.rhcgroup.com

Thompson Associates Inc.
9710 Bunsen Parkway
Louisville, KY 40229
Contact: Donald Thompson, President
Phone: (502) 992-0751
Website: www.thompsoninc.com

Underwriters Safety & Claims
1700 Eastpoint Parkway
Louisville, KY 40223
Contact: Jim Baumann, Commercial Insurance
Phone: (502) 244-1343
Website: www.uscky.com
An innovative national insurance agency offering commercial insurance & employee benefits.

Wells Fargo Insurance Services
950 Breckenridge Lane, Ste. 50
Louisville, KY 40207
Contact: Rick Houze
Phone: (502) 425-9444
Website: www.wfis.wellsfargo.com
Insurance for Health Care providers.

Healthcare Real Estate Services

Conficare – Magnolia Springs Senior Living
1515 Ormsby Station Court
Louisville, KY 40223
Contact: Rob Bush, President
Phone: (502) 315-1724
Website: www.conficare.com

Faulkner Healthcare Real Estate
9625 Ormsby Station Road
Louisville, KY 40223
Contact: Steve Higdon
Phone: (502) 891-8200
Website: www.faulknerhealthcare.com

Faulkner Healthcare Real Estate is a division of Faulkner Real Estate, which has more than 20 years of experience and expertise in site selection, development and property management. In the Louisville area, it owns, manages and leases nearly two million square feet of commercial real estate. Its portfolio is made up of medical office buildings, Class A office buildings and neighborhood retail.

Sperry Van Ness
11001 Bluegrass Parkway, Ste. 300
Louisville, KY 40299
Contact: Herbert Head
Phone: (502) 297-8797
Website: www.louisville-commercial.com
A commercial real estate brokerage firm which represents buyers and sellers, landlords, tenants and investors in commercial real estate transactions.

TRIO Commercial Property Group
4205 Springhurst Boulevard, Ste. 202
Louisville, KY 40241
Contact: Seth Edens, VP Medical Office Team
Phone: (502) 454-4933
Website: www.triocpg.com

Venterra Realty
304 W. Liberty Street
Louisville, KY 40202
Contact: Grant Hill
Phone: (502) 515-4455
Website: www.GantHill.com

Wakefield, Reutlinger & Company
6511 Glenridge Park Place, Ste. 10
Louisville, KY 40222
Contact: Ellen Bland
Phone: (502) 425-0225
Website: www.wrrealtors.com

WRE Realty, LLC
332 W. Broadway
Louisville, KY 40202
Contact: Jim Wilson
Phone: (502) 585-6162

Hospital & Long Term Care

Alliant Management Services
2650 Eastpoint Parkway, Ste. 310
Louisville, KY 40223
Contact: Christopher West, President
Phone: (502) 992-3525
Website: www.alliantmanagement.com
Hospital management company.

Always Best Care Senior Services
9900 Corporate Campus Drive, Ste. 3000
Louisville, KY 40223
Contact: Robin Helfers, Owner
Phone: (502) 265-5848
Website: www.alwaysbestcare.com
Senior Care.

Appalachian Regional Healthcare, Inc.
2285 Executive Drive
Lexington, KY 40505
Contact: Hollie Phillips, Director
Phone: (859) 226-2440
Website: www.arh.org

Atria Communities
401 S. Fourth Street, Ste. 1900
Louisville, KY 40202
Contact: John Moore, CEO
Phone: (502) 779-4700
Website: www.atriaseniorliving.com
Nursing and personal care facilities.

Baptist Healthcare Systems

4007 Kresge Way
Louisville, KY 40207
Contact: Susan Stout Tamme, President, Louisville Market
Phone: (502) 896-5011
Website: www.bhsi.com
General medical, surgical and hospitals.

Baptist Hospital East

4000 Kresge Way
Louisville, KY 40207
Contact: Janet Norton
Phone: (502) 896-5000
Website: www.baptisteast.com

Bellewood Homes for Children
1722 Bardstown Road
Louisville, KY 40205
Contact: Michael RoBards, Assoc. Director of Operations
Phone: (502) 451-1926
Website: www.uspiritus.org

Belmont Village
4600 Bowling Boulevard, Ste. 3
Louisville, KY 40207
Contact: Sheila Carter, Executive Director
Phone: (502) 721-7500
Website: www.belmontvillage.com
Assisted living community.

Breckinridge Memorial Hospital
1011 Old Highway 60
Hardinsburg, KY 40143
Contact: Mike Cooper, CEO
Phone: (270) 756-7000
Website: www.breckinridgehealth.org

Bridgehaven Mental Health Services
950 S. 1st Street
Louisville, KY 40203
Contact: Barbara Hedsbeth, Clinical Director
Phone: (502) 585-9444
Website: www.bridgehaven.org
Mental Health.

Care Network
161 Chenoweth Lane
Louisville, KY 40207
Contact: Eva Spaid, President/Owner
Phone: (502) 719-6600
Website: www.carenetwork-evaspaid.com
Provides personal care and supplemental staffing
24 hours a day, seven days a week.

Carroll County Memorial Hospital
309 11th Street
Carrollton, KY 41008
Contact: Kalia Rarey, CEO
Phone: (502) 732-4321
Website: www.carrollcountyhospital.org

Central Baptist Hospital
1740 Nicholasville Road
Lexington, KY 40503
Contact: Will Edridge, Administrative Resident
Phone: (859) 260-6100
Website: www.centralbap.com

Central State Hospital
10510 LaGrange Road
Louisville, KY 40223
Contact: Paula Travis, Administrator
Phone: (502) 253-7000
Website: www.dbhddid.ky.gov/facilities/
An adult, acute care, psychiatric hospital. Owned
and operated by the Commonwealth of Kentucky.

Christian Care Communities

960 S. 4th Street
Louisville, KY 40203
Contact: Keith Knapp, President & CEO
Phone: (502) 560-5140
Website: www.christiancarecommunities.org
Kentucky's largest faith-based not-for-profit provider of affordable housing and long-term care for Older Adults through an extensive network of retirement communities, including independent living apartments and patio homes, assisted living, and skilled nursing care.

Christopher East Health Care
4200 Browns Lane
Louisville, KY 40220
Contact: Jane Bibb-Williams, Administrator
Phone: (502) 459-8900
Website: www.hcr-manorcare.com
Nursing and personal care facilities.

Clark Memorial Hospital
1220 Missouri Ave
Jeffersonville, IN 47130
Contact: Martin Padgett, President & CEO
Phone: (812) 282-6631

Website: www.clarkmemorial.org
A comprehensive medical center providing advanced medical care.

Elmcroft Senior Living
9510 Ormsby Station Road, Ste. 101
Louisville, KY 40223
Contact: Pat Mulloy, CEO
Phone: (502) 753-6001
Website: www.elmcroft.com
Senior Care.

Episcopal Church Home
7504 Westport Road
Louisville, KY 40222
Contact: Anne Venio, CEO
Phone: (502) 736-7800
Website: www.episcopalchurchhome.org
A faith-filled senior neighborhood.

Evergreen Rehabilitation
136 St. Matthews Ave, Ste. 300
Louisville, KY 40207
Contact: Douglas Hall, Executive VP
Phone: (502) 897-1700
Website: www.evergreenrehab.com
Rehab.

Franciscan Health Care Center
3625 Fern Valley Rd.
Louisville, KY 40219
Contact: Deborah Boone, Marketing Director
Phone: (502) 964-3381
Website: www.franciscanhc.com
Rehab.

Golden Living Center
227 Browns Lane
Louisville, KY 40207
Contact: Clifton Lake, Executive Director
Phone: (502) 893-2595
Website: www.goldenlivingcenters.com

Hardin Memorial Hospital
913 N. Dixie Avenue
Elizabethtown, KY 42701
Contact: Dennis Johnson, CEO
Phone: (270) 737-1212
Website: www.hmh.net
A collection of healthcare services in Hardin, LaRue, Meade and Nelson counties.

Hillcreek Manor Rehab & Nursing Center
3116 Breckinridge Lane
Louisville, KY 40220
Contact: Bert Sedoris
Phone: (502) 459-9120
Skilled nursing care facility.

Hosparus, Inc.
3532 Ephraim McDowell Drive
Louisville, KY 40205
Contact: Phil Marshall, President & CEO
Phone: (502) 456-6200
Website: www.hosparus.org
A fully accredited, non profit organization that provides care, comfort and counseling for people facing life-limiting illnesses in 23 Kentucky and Southern Indiana counties.

Jewish Hospital & St. Mary's HealthCare
220 Abraham Flexner Way, Ste. 904
Louisville, KY 40202
Contact: Chris Roszman, VP, Finance
Phone: (502) 587-4011
Website: www.jhsmh.org
Regional health care network that includes 70 health care facilities and 1,900 patients beds in Kentucky and southern Indiana.

Kentuckiana Nursing Service
5001 Crown Manor Place
Louisville, KY 40218
Contact: Kim Arington, Executive Director
Phone: (502) 540-1482
Website: www.kynursing.com
Nurse staffing.

KentuckyOne Health
200 Abraham Flexner Way
Louisville, KY 40202
Contact: Ashley Davis
Phone: (502) 587-4011
Website: www.kentuckyonehealth.org

Kindred Healthcare
680 S. 4th Street
Louisville, KY 40202
Contact: Ben Breier, EVP & President of Hospital Division
Phone: (502) 596-7300
Website: www.kindredhealthcare.com
A healthcare services company that through its subsidiaries operates hospitals, nursing centers and a contract rehabilitation services business, Peoplefirst rehabilitation services, across the United States.

Lincoln Hills of New Albany
326 Country Club Drive
New Albany, IN 47150
Contact: Dave Powell, Administrator
Phone: (812) 948-1311
Website: www.lincolnhillshealthcare.com
Long term care.

Muhlenberg Community Hospital
440 Hopkinsville Street
Greenville, KY 42345
Contact: Mindy McCulley
Phone: (270) 338-8000
Website: www.mchky.org

Nazareth Home

2000 Newburg Road
Louisville, KY 40205
Contact: Michael Buckman, Director of Development
Phone: (502) 459-9681
Website: www.nazhome.org
Skilled nursing care facility.

Norton Healthcare

234 E. Gray Street, Ste. 262
Louisville, KY 40202
Contact: Stephen Williams, President & CEO
Phone: (502) 629-8000
Website: www.nortonhealthcare.com
A regional not-for-profit healthcare delivery system.

Parkway Medical Center

1155 Eastern Parkway
Louisville, KY 40217
Contact: Rick Foley
Phone: (502) 636-5241
Website: www.parkwayrehabandnursing.com
Skilled nursing care facility.

Pattie A. Clay Regional Medical Center
801 Eastern Bypass
Richmond, KY 40475
Contact: C. Todd Jones, CEO

Premier Caring Hands
9750 Ormsby Station Road, Ste. 105
Louisville, KY 40223
Contact: Aaron Willis
Phone: (502) 394-1840
Website: www.premiercareinc.com

Presbyterian Homes and Services of KY
1030 Alta Vista Road
Louisville, KY 40205
Contact: Mark Gray, President
Phone: (502) 259-9101
Website: www.phsk.org
Assisted living retirement community with skilled nursing care facility.

ResCare, Inc.

9901 Linn Station Road
Louisville, KY 40223
Contact: Ralph Gronefeld, Jr., President and CEO
Phone: (502) 394-2240

Website: www.rescare.com
30+ years of experience helping people reach their highest level of independence, is one of the largest providers of home care to the elderly and those with disabilities.

Ridge Behavioral Health System
3050 Rio Dosa Drive
Lexington, KY 40509
Contact: Chuck Webb
Phone: (859) 269-2325
Website: www.ridgebhs.com

Riverview Village
586 Eastern Boulevard
Clarksville, IN 47129
Contact: Peter Graves
Phone: (812) 282-6663
Website: www.ascseniorcare.com/location/riverview-village/
Skilled nursing care facility.

Scott Memorial Hospital
1451 N. Gardner Street
Scottsburg, IN 47170
Contact: Clifford Nay, President & CEO
Phone: (812) 752-3456
Website: www.scottmemorial.com

Senior Home Transitions

331 Townepark Circle, Ste. 100B
Louisville, KY 40243
Contact: Patti Naiser
Phone: (502) 396-9228
Website: www.seniorht.com

Signature HealthCARE

12201 Bluegrass Parkway
Louisville, KY 40299
Contact: E. Joseph Steier III, President & CEO
Phone: (502) 568-7702
Website: www.ltcrevolution.com

St. Claire Regional Medical Center
222 Medical Circle
Morehead, KY 40351
Contact: Mary Horsley, TeleCare Clinical Coordinator
Phone: (606) 783-6500
Website: www.st-claire.org

Summerfield Health and Rehab Center
1877 Farnsley Road
Louisville, KY 40216
Contact: Susie Blakey
Phone: (502) 448-8622
Website: www.elmcroft.com/health-and-rehab/summerfield/
Skilled nursing care facility.

Ten Broeck Hospital
8521 LaGrange Road
Louisville, KY 40242
Contact: Dean Saling
Phone: (502) 426-6380
Website: www.thebrookhospitals.com
Psychiatric hospital.

Trilogy Health Services

303 N. Hurstbourne Parkway, Ste. 200
Louisville, KY 40222
Contact: Randall Bufford, President & CEO
Phone: (502) 412-5847
Website: www.trilogyhs.com
Housing and healthcare services for older adults.

UK HealthCare
800 Rose Street
Lexington, KY 40536
Contact: Mark Birdwhistell, Chief External Affairs Officer
Phone: (859) 257-1000
Website: www.ukhealthcare.uky.edu
Draws upon the clinical expertise of the faculty in all six colleges – Medicine, Pharmacy, Nursing, Health Sciences, Dentistry and Public Health – to advance patient care.

University of Louisville Healthcare
530 S. Jackson Street
Louisville, KY 40202
Contact: Jim Taylor, CEO
Phone: (502) 562-3000
Website: www.uoflhealthcare.org
Academic, research, and teaching medical center.

VA Medical Center
800 Zorn Ave.
Louisville, KY 40206
Contact: Tim Shea, Director
Phone: (502) 287-4000
Website: www.louisville.va.gov

Ventas
10350 Ormsby Park Place, Ste. 300
Louisville, KY 40223
Contact: Debra Cafaro, President & CEO
Phone: (502) 357-9000
Website: www.ventasreit.com
Health-related Real Estate Investment Trust.

Wellstone Regional Hospital
2700 Vissing Park Road
Jeffersonville, IN 47130
Contact: Thomas Stormanns, CEO
Phone: (812) 284-8000
Website: www.wellstonehospital.com
A psychiatric hospital, offering 88 acute care beds for children,

adolescents, adults and geriatric patients; & 12 residential beds for children & adolescents. Comprehensive outpatient services are also available for Partial Hospitalization & Intensive Outpatient Programs.

Hospitality/Tourism

21C Hotel
700 W. Main Street
Louisville, KY 40202
Contact: Monica Claerbout
Phone: (877) 217-6400
Website: www.21cmuseumhotels.com
Luxury hotel accommodations combine with contemporary art to create an award-winning hotel experience.

Crowne Plaza Louisville Airport Hotel
830 Phillips Lane
Louisville, KY 40209
Contact: Laura Whitehead
Phone: (502) 367-2251
Website: www.cplouisville.com

Kentucky Center for the Arts

501 W. Main Street
Louisville, KY 40202
Contact: Heather Bell
Phone: (502) 584-7777
Website: www.kentuckycenter.org
The Kentucky Center for the Performing Arts brings the finest music, dance, theater, and more to Kentucky. Home to Louisville's nationally-renowned arts scene, The Louisville Orchestra, Louisville Ballet, as well as a host of community theaters and their own Kentucky Center Presents performances.

Louisville Convention & Visitors Bureau
401 W. Main Street, Ste. 2300
Louisville, KY 40202
Contact: Jim Wood
Phone: (502) 584-2121
Website: www.gotolouisville.com
Welcome to a place where the question isn't what to do ... it's what to do first. A place loaded with endless possibilities.

The Muhammad Ali Center
144 N. 6th Street
Louisville, KY 40202
Contact: Barry Alberts

Phone: (502) 584-9254
Website: www.alicenter.org
Guided by Muhammad Ali's six core principles, the Muhammad Ali Center features an interactive museum, educational programming, and special events to inspire young adults and adults to pursue greatness in their own lives, communities, and countries.

Life Sciences

Advanced Cancer Therapeutics
429 West Muhammad Ali Blvd., Ste. 600
Louisville, KY 40202
Contact: Randall Riggs, President & CEO
Phone: (502) 589-6404
Website: www.advancedcancertherapeutics.com
Biotechnology drug discovery & development in the area of oncology.

Advanced Chemtech
5609 Fern Valley Road
Louisville, KY 40228
Contact: Craig Kalmer, Director of Sales and Marketing
Phone: (502) 969-0000
Website: www.advancedchemtech.com
Research innovation solutions in lab automation, chemicals, and custom production services.

Amgen Inc.
12000 Plantside Drive
Louisville, KY 40299
Contact: David Meier
Phone: (515) 209-9063
Website: www.amgen.com
Pharmaceutical products, wholesale.

ApoImmune, Inc.
1044 E. Chestnut Street
Louisville, KY 40204
Contact: Kathy MacLeod, VP, Research and Development
Phone: (502) 212-2493
Website: www.apoimmune.com
A biotechnology company developing novel immunotherapies, which are treatments on the concept of regulating the immune system to fight disease. The company is focused on cancer, infectious disease, and Type 1 diabetes.

Assenti, LLC
PO Box 17191
Louisville, KY 40217
Contact: Doug Jackson, Member
Phone: (502) 727-2558
Website: www.assenti.net

AstraZeneca
500 Rockfield Richpond
Rockfield, KY 42274
Contact: Stacey Ellis
Phone: (770) 442-1321
Website: <http://www.astrazeneca.com>
Research based pharmaceutical company.

BFW, Inc
Corporate Member
2307 River Road, Ste. 103
Louisville, KY 40206
Contact: Lynn Cooper
Phone: (502) 899-1808
Website: www.bfwinc.com

Boston Scientific
111 Monument Circle, #2900
Indianapolis, IN 46204
Contact: Mark C. Bartell
Phone: (812) 829-4877
Website: www.bostonscientific.com

Bradmer Pharmaceuticals
9900 Corporate Campus Drive, Ste. 3000
Louisville, KY 40223
Contact: Paul Van Damme, CFO
Phone: (502) 657-6038
Website: www.bradmerpharma.com
Cancer drug development company.

MedResearch Inc.
354 Waller Avenue, Ste. 110
Lexington, KY 40504
Contact: Pam Linville, President
Phone: (859) 225-5672
Contract research organization.

Medtronic Inc.
495 Lightfoot Road
Louisville, KY 40207
Contact: John Hanley, District Manager
Phone: (502) 423-7725
Website: www.medtronic.com
Manufacturer of medical equipment.

MedVenture Technology Corporation
2301 Centennial Boulevard
Jeffersonville, IN 47130
Contact: Kevin Bramer, President/CEO
Phone: (812) 280-2400
Website: www.medventure.com
Development and manufacturing of innovative medical device technology.

Merck & Co., Inc.
5105 Heather Hill
LaGrange, KY 40031

Contact: Bruce Eckerle, Medical Account Executive
Phone: (502) 222-5206
Website: www.merck.com
Pharmaceuticals.

MetaCyte Business Lab, LLC
201 E. Jefferson Street
Louisville, KY 40202
Contact: Steve Gailar
Phone: (502) 569-1020
Website: www.metacyte.biz
An independent health and life science incubator founded in 2002 that is now operating as a for-profit subsidiary of the UofL Foundation.

NeuroTek, LLC
1103 Hollendale Way
Goshen, KY 40026
Contact: Jonathan Cowan, Ph.D.
Phone: (502) 228-0605
Website: www.peakachievement.com
Manufactures Peak Achievement Training devices.

Novera
201 E. Jefferson Street, Ste. 104
Louisville, KY 40202
Contact: Patrick Migliore, CEO
Phone: (502) 569-1030
Website: www.noveradrugs.com

Nucleus, Kentucky's Life Sciences & Innovation Center, LLC
201 E. Jefferson Street, Ste. 315
Louisville, KY 40202
Contact: Vickie Yates Brown, CEO
Phone: (502) 584-7824
Website: www.nucleusky.com
Supported by the University of Louisville Foundation, NUCLEUS connects the best assets from the University of Louisville - discoveries, new technologies and a passion for improving lives - with the business community, and helps transform them into new high paying jobs in tomorrow's dynamic knowledge based economy.

Pharmaron
201 E. Jefferson Street, Med Center Three
Louisville, KY 40202
Contact: Boliang Lou
Phone: (502) 569-1047
Website: www.pharmaron.com

PharmaStat
1920 Stanley Gault Parkway
Louisville, KY 40223
Contact: Paul Elmes, CEO
Phone: (502) 657-2381
Website: www.pharmastat.com

PharMerica Corporation
1901 Campus Place
Louisville, KY 40299
Contact: Greg Weishar
Phone: (502) 627-7000, President/CEO
Website: www.pharmerica.com
Long term care pharmacy services.

Potentia Pharmaceuticals, Inc.
6400 Westwind Way, Suite A
Crestwood, KY 40014
Contact: Cedric Francois
Phone: (502) 241-4114
Website: www.potentiapharma.com

Pradama Inc.
201 E. Jefferson Street, Ste. 125
Louisville, KY 40202
Contact: Kevyn Merten, VP of Drug Development
Phone: (502) 569-1020
Website: www.pradama.com
A pharmaceutical company focused on the development of drugs for bone diseases and disorders.

Regenasight, LLC
1400 Willow Avenue, Apt. 901
Louisville, KY 40204
Contact: J. Kevin McCurren
Phone: (502) 298-3137
Website: www.regenasight.com
Early stage biotech company developing products for ophthalmology surgery and diseases of the eye.

Regenerex, LLC
201 E. Jefferson Street
Louisville, KY 40202
Contact: Brad King, Director of Operations
Phone: (502) 569-1065
Website: regenerex.com
Developing clinical applications for a cell processing technology to promote safe and effective bone marrow transplantation. The company will provide therapies for solid organ transplant, autoimmune and blood disorders, and malignant disease.

Revive Skincare
214 S. Clay Street
Louisville, KY 40202
Contact: Greg Brown, MD
Phone: (502) 581-0400
Website: www.reviveskincare.com

Schorin Strategies, LLC
1400 Willow Ave., Ste. 1901
Louisville, KY 40204

Contact: Marilyn Schorin
Phone: (502) 452-1100
Website: www.schorin-strategies.com

Sheltowee LLC
16810 Aiken Road
Louisville, KY 40245
Contact: Alex Day, CEO
Phone: (502) 299-5079
Website: www.sheltowee.com
Pharmaceutical development company.

Techshot
7200 Highway 150
Greenville, IN 47124
Contact: Mark Deuser, President/CEO
Phone: (812) 923-9591
Website: www.techshot.com
Engineering and product development services.

US World Meds
4010 Dupont Circle, Ste. 700
Louisville, KY 40207
Contact: P. Breckinridge Jones, CEO
Phone: (502) 893-3235
Website: www.usworldmeds.com
An 85-year-old Kentucky-based specialty pharmaceutical company, organized to develop and sell proprietary pharmaceuticals for niche patient populations.

Vitapharm
PO Box 1027
Louisville, KY 40201
Contact: Alex DiGenis
Phone: (502) 589-5544

Wyeth
1604 Mahogany Run Drive
La Grange, KY 40031
Contact: Craig Henry, Regional Account Manager
Phone: (502) 262-0601
Website: www.wyeth.com

Logistics, Distribution & Manufacturing

A. Arnold Relocation
5200 Interchange Way
Louisville, KY 40229
Contact: Bruce Colton, VP/GM Louisville
Phone: (502) 694-3800
Website: www.aarnoldmovingcompany.com
Moving company.

Active Ankle Systems
233 Quartermaster Ct.
Jeffersonville, IN 47130
Contact: Glen Snow
Phone: (812) 258-0663

American Homepatient
4820 Poplar Place Drive, Ste. 100
Louisville, KY 40213
Contact: Joe Houk, General Manager
Phone: (502) 968-1751
Website: www.ahom.com
Hospital equipment & supplies.

American Printing House for the Blind
1839 Frankfort Ave.
Louisville, KY 40206
Contact: Bill Beavin
Phone: (502) 895-2405
Website: www.aph.org

Apria Healthcare
1805 Taylor Ave.
Louisville, KY 40213
Contact: Larry Higby
Phone: (502) 454-3550
Website: www.apria.com
Hospital equipment & supplies.

Babyology
3934 Dutchmans Lane
Louisville, KY 40207
Contact: Vickie Saunders
Phone: (502) 721-7727
Website: www.babyology.com

Bio-Medical Equipment Service
2709 S. Park Rd
Louisville, KY 40219
Contact: Ed Evans, President
Phone: (502) 361-4500
Website: www.bmesco.com

Cardiac Connections
5119 Terry Road
Louisville, KY 40216
Contact: Judy Jones
Phone: (502) 447-1773

Cardinal Medical Specialties
2950 Breckenridge Lane
Louisville, KY 40220
Contact: Charlotte Smith, President
Phone: (502) 969-9652
Website: www.obamed.com

Cintas Corporation
401 Industry Road
Louisville, KY 40208
Contact: Rob Campbell
Phone: (502) 634-3942
Website: www.cintas.com

Cirrus Medical Technologies
3812 Barbara Ann Boulevard
Crestwood, KY 40014
Contact: David Wilson, President
Phone: (800) 259-2915
Website: www.cirrusmeditech.com

Cymbion LLC
2307 River Road, Ste. 203
Louisville, KY 40206
Contact: Pete Malin, Vice President
Phone: (502) 259-9010
Website: www.cymbionllc.com

Darob Medical Services
1801 Research Drive
Louisville, KY 40299
Contact: Robert Ford, President
Phone: (502) 491-1535
Website: www.darobinc.com
A medical waste services company that operates a
75-ton-per-day treatment facility.

Dre Medical Inc.
1800 Williamson Court
Louisville, KY 40223
Contact: Michael Dirr, President
Phone: (502) 244-4444
Hospital equipment & supplies.

Electronic Design & Research
7331 Intermodal Drive
Louisville, KY 40258
Contact: Vladimir Shvartsmar
Phone: (502) 933-8660
Website: www.vsholding.com
Medical equipment & supplies.

Goulds Discount Medical
3901 Dutchmans Lane, Ste. 100
Louisville, KY 40207
Contact: Ed Gould
Phone: (502) 491-2000
Website: www.gouldsdiscountmedical.com
Largest medical showroom in the midwest -
Also largest selection of medical uniforms.

Hanger Prosthetics
1023 E. Broadway
Louisville, KY 40204
Contact: Scott Kerr

Phone: (502) 585-2139
Website: www.hanger.com
Prosthetic and orthotic equipment.

Harrison Medical Inc.
721 S. Preston Street
Louisville, KY 40203
Contact: Sterling Harrison, Jr.
Phone: 502-589-9325
Website: www.harrisonmedical.com
Medical equipment & supplies.

HD Smith
6001 Global Distribution Way, Ste. 102
Louisville, KY 40228
Contact: Terry McKinney
Phone: (502) 671-2481
Website: www.hdsmith.com
Wholesales Pharmaceutical Distribution

Health Procurement Services
9403 Mill Brook Road
Louisville, KY 40223
Contact: Tim Copeland
Phone: (502) 425-0662
Hospital equipment & supplies.

Heartland Medical Sales & Service
2601 Holloway Road
Louisville, KY 40299
Contact: Brad Rumph
Phone: (502) 671-1014
Medical equipment & supplies.

Holdaway Medical Services
2500 Constant Comment Place
Louisville, KY 40299
Contact: Gayle Devin
Phone: (502) 266-0092
Medical equipment & supplies.

HomeLine, Inc.
10414 Bluegrass Parkway
Louisville, KY 40299
Contact: Shirish Mody
Phone: (502) 491-1851
Home healthcare medical supplies distributor.

Hooks Oxygen & Medical Equipment
1235 Magnavox Way
Fort Wayne, Indiana 46804
Contact: Randy Spitznagel
Phone: (260) 432-3321
Hospital equipment & supplies.

Interlock Industries
545 S. 3rd Street, Ste. 310
Louisville, KY 40202

Contact: Craig Mackin
Phone: (502) 569-2007
Website: www.interlockindustries.com
Owners of Yellow Ambulance and Medical Transport.

Isopure
141 Citizens Boulevard, Ste. A
Simpsonville, KY 40067
Contact: Kevin Gillespie
Phone: (502) 77-1000
Website: www.isopure.com
Water purification systems.

Junkin Safety Appliance Co, Inc.
3121 Millers Lane
Louisville, KY 40216
Contact: Chris Mercke
Phone: (502) 775-8303
Website: www.junkinsafety.com
Manufacturer stretchers and first aid equipment.

Kentucky Packaging Service
1100 W. Market Street
Louisville, KY 40201
Contact: D.R. Thacker
Website: www.pscfabricating.com
Phone: (502) 625-7700

Laboratory Supply Company
250 Ottawa Avenue
Louisville, KY 40209
Contact: Bob Cramer
Phone: (502) 363-1891
Website: www.labsco.com
Founded in Louisville in 1972, LABSCO is the largest privately owned, full-line medical equipment and lab supplies distributor in the US. It stocks over 30,000 items and ships nationwide from its 9 strategically located distribution centers.

Lincare Inc.
3224 Commerce Center Place
Louisville, KY 40299
Contact: Steve Hamilton
Phone: (502) 775-5345
Website: www.lincare.com
Sets standards of excellence for providing respiratory care, infusion therapy, and medical equipment to patients in homes.

Lite Source Inc.
11830 Capital Way
Louisville, KY 40299
Contact: Michele Morgan
Phone: (502) 266-9645
Website: www.litesourceinc.com
Hospital equipment & supplies.

MDI (Making Distribution Intelligent)
4500 Progress Blvd.
Louisville, KY 40218
Contact: Ted Himburg
Phone: (502) 454-9013
Website: www.rxcrossroads.com
Warehousing of health-related products.

MedaStat
1920 Stanley Gault Parkway, Ste. 100
Louisville, KY 40223
Contact: Kevin McKim
Phone: (502) 489-9949
Website: www.medastat.com

Medical Center DME
337 S. Preston Street
Louisville, KY 40202
Contact: Matthew Hayden
Phone: (502) 540-5523
Medical equipment & supplies.

Micro Supply Company, Inc.
3301 Morningview Drive
Louisville, KY 40242
Contact: Howard Whitman
Phone: (502) 426-5616
Medical equipment & supplies.

Office Resources, Inc.
816 E. Broadway
Louisville, KY 40204
Contact: George Bell
Phone: (502) 589-8400
Website: www.oriusa.com
Louisville's oldest & largest office furniture distributor.

Olsen Medical
3230 Commerce Center Place
Louisville, KY 40211
Contact: Mike Hand
Phone: (502) 772-4280
Website: www.olsenmedical.com
Electrosurgical instruments specialist.

Optical Dynamics Corp.
1950 Production Court
Louisville, KY 40299
Contact: Galen Powers
Phone: (502) 671-2020
Website: www.opticaldynamics.com
Optical lens and equipment company.

Physicians Sales & Service
5150 Interchange Way, Ste. B
Louisville, KY 40229
Contact: Ted Hirsch

Phone: (502) 810-2800
Website: www.pssd.com
Medical equipment & supplies.

Praxair Healthcare Services
904 Industrial Drive
Madison, IN 47250
Contact: Steve Dawson
Phone: (812) 265-4242
Medical equipment & supplies.

Preferred Medical Supply
309 Townpark Circle, Ste. 100
Louisville, KY 40243
Contact: Michael Cummins
Phone: (502) 489-5233
Hospital equipment & supplies - wholesale.

Progressive Medical Instrumentation Inc.
2205 Watterson Trail
Louisville, KY 40299
Contact: Eleanor Johnson
Phone: (502) 267-1100
Medical equipment & supplies.

Promed, Inc.
2700 Holloway Road, Ste. 106
Louisville, KY 40299
Contact: Vicki Lurie
Phone: (502) 266-6162
Website: www.promed-inc.com
Orthopedic supplies.

Renaissance Medical
4530 Bishop Lane, Ste. 1-00
Louisville, KY 40218
Contact: Tony Ward
Phone: (502) 961-8560
Website: www.renmed.net

Restorative Medical
332 E. Broadway
Brandenburg, KY 40108
Contact: Kim Lawson Bonn
Phone: (270) 422-5454
Website: www.restorativemedical.com

Rogers Ultrasound Imaging, Inc.
183 Travis Circle, Ste. C
Frankfort, KY 40601
Contact: Mark Rogers
Phone: (502) 227-8611

RxCrossroads
10350 Ormsby Park Place, Ste. 500
Louisville, KY 40223
Contact: David Hileman
Phone: (502) 318-1100
Website: www.rxcrossroads.com

Service provider for product support and distribution to pharmaceutical and biotechnology manufacturers.

Scheu & Kniss
1500 W. Ormsby Avenue
Louisville, KY 40210
Contact: David Risinger
Phone: (502) 635-6303
Website: www.eliz.com
Manufacturer of presses for pharmaceutical tablets.

Scooter Store
412 Production Court
Louisville, KY 40299
Contact: Dean Preston
Phone: (502) 491-9968
Medical equipment & supplies.

Sea Long Medical Systems
4601 Commerce Crossings Drive
Louisville, KY 40229
Contact: Gerald Cox
Phone: (502) 969-2305
Hospital equipment & supplies - wholesale.

The Raynostix Group LLC
11430 Watterson Court, Ste. 500
Louisville, KY 40299
Contact: Tom Walker
Phone: (502) 636-0487
Website: www.raynostix.com
Radiology products and services.

Thermal Equipment Sales Inc.
13151 Middletown Industrial Boulevard
Louisville, KY 40223
Contact: Paul Mattingly
Phone: (502) 473-0829
Website: www.thermaleq.com

Touchless Care Concepts
1215 Summit Ave.
Louisville, KY 40204
Contact: Garret Cawthon
Phone: (502) 418-1052
An R&D-driven company manufacturing spray-on, no rub-in products for incontinence skincare.

Ultra Trace Detection, LLC
6708 Sycamore Woods Drive
Louisville, KY 40241
Contact: Paul Lederer
Phone: (502) 553-9101

Universal Linen Service
1807 Commerce Road
Louisville, KY 40208
Contact: Tom Austin

Phone: (502) 635-1507
Website: www.universallinen.com
Linen services.

UPS

1920 Outer Loop
Louisville, KY 40213
Contact: Rick Shaver
Phone: (502) 359-8268
Website: www.ups.com
Package delivery company with capacity for specialized transportation and logistics services.

Urban Mobility Medical Home Health
3224 Commerce Center Place
Louisville, KY 40211
Contact: Walter J. Crowdus, III
Phone: (502) 772-4999
Medical equipment & supplies.

Vitronic Machine Vision Ltd.
11900 Plantside Drive
Louisville, KY 40299
Contact: Melanie Mefford
Phone: (502) 266-2699
Website: www.vitronic.com
In co-operation with our national and international customers we design and produce made-to-measure machine vision solutions for industrial automation tasks.

Westport Medical
11603 Shelbyville Road, Ste. 4
Louisville, KY 40243
Contact: Curtis Wiggins
Phone: (502) 425-4726
Medical equipment & supplies.

Media

Business First
455 S. 4th Street, Ste. 278
Louisville, KY 40202
Contact: Judy Berzof
Phone: (502) 583-1731
Website: www.bizjournals.com
Up to date breaking business news.

Jean West's Medical Daily/Digest
Contact: Jean West, Host/Producer
Phone: (502) 609-4315
Website: www.faceswesttv.com
The area's first and only local programs devoted entirely to medical and health issues, hosted by Emmy award winning broadcaster Jean West.

MedCity Media – MedCity News
5115 W. Shoreline Drive
Floyds Knobs, IN 47119
Contact: Veronica Combs, Editor in Chief
Phone: (812) 987-6076
Website: www.medcitynews.com

Medical News

207 W. Market Street
Louisville, KY 40202
Contact: Ben Keeton
Phone: (502) 561-1240
Website: www.medicalnews.md

The Courier-Journal
525 W. Broadway
Louisville, KY 40201
Contact: Pat Howington
Phone: (502) 582-4229
Website: www.courier-journal.com

The Lane Report

201 E. Main Street, Ste. 1402
Lexington, KY 40507
Contact: Ed Lane
Phone: (859) 244-3500
Website: www.lanereport.com

Medical Support Services

AgeTransitions

3526 Ephraim McDowell Drive
Louisville, KY 40205
Contact: Charlaire Reynolds
Phone: (502) 992-0749
Website: www.agetransitions.com

BFW, Inc.
2307 River Green Circle
Louisville, KY 40206
Contact: Lynn Cooper, President/CEO
Phone: (502) 899-1808
Website: www.bfwinc.com

CORT Furniture
2801 S. Hurstbourne Parkway
Louisville, KY 40220
Contact: Mark Clark
Phone: (502) 499-2779
Website: www.cort.com
A Berkshire Hathaway company with showrooms and warehouses in 45 locations. We provide clients with services for rental, used and new furniture. We also provide rental relocation services.

Creative Strategies

5650 Bardstown Road
Louisville, KY 40291
Contact: Ralph Piercy
Phone: (502) 491-2900
Website: <http://www.creativestrategiesus.com>
Accu-flo automates the process of administering, documenting, and re-ordering medications and treatments safely and efficiently for residents of assisted.

dGv Services, LLC

1002 Buckner Center, Ste. 8
LaGrange, KY 40031
Contact: Gail Story, Owner
Phone: (502) 225-4900
Website: www.dgvservices.com

Frost-Arnett

1327 E. Broadway Street
Campbellsville, KY 42718
Contact: Trae Christian, Account Executive
Phone: (502) 523-0636
Website: www.frost-arnett.com

Genesis Shop

9016 Taylorsville Road, Ste. 128
Louisville, KY 40299
Contact: Lisa Lee
Phone: (502) 544-7400
Website: www.thegenisshop.com
Educates against drug abuse and provides accurate, safe drug testing kits to prevent drug abuse in the home and workplace.

GLA Collection Company

2630 Gleeson Lane
Louisville, KY 40299
Contact: Michael Lynch
Phone: (502) 267-7522
Website: www.glacompany.com
Medical service organizations.

Healthcare Practice Consultants, LLC

3924 Dupont Square, Ste. A
Louisville, KY 40207
Contact: Charles K. Thieman
Phone: (502) 896-5846
Website: www.healthpracticeconsultants.com
Medical & dental business consultants.

Healthcare Transformations

1223 Kessler Blvd. E. Dr.
Indianapolis, IN 46220
Contact: Eliza Gordner
Phone: (317) 563-1042
Website: www.healthcaretransformations.us
Use proven process improvement techniques from manufacturing and industry to give your hospital or long-term care facility the tools needed to create improved patient care, employee satisfaction, and financial returns.

Home Helpers and Direct Link

657 S. Hurstbourne Parkway, Ste. 325
Louisville, KY 40222
Contact: Michelle Maxim, President
Phone: (502) 384-4357
Website: www.homehelpershomecare.com

ID&A

1700 South 5th Street
Louisville, KY 40208
Contact: Michael Morris
Phone: (502) 562-9255
Website: www.id-a.com
ID&A melds the creative disciplines of architecture and interior design with leading edge furniture solutions; culminating in work environments which project our customer's brand, boost employee efficiency and provide healthful and fun settings in which to work.

Interstate All Battery Center

3226 Industrial Parkway
Jeffersonville, IN 47130
Contact: Steve Huber, Senior Account Manager
Phone: (502) 297-8600
Website: www.interstatebatteries.com

Leading Home Care

9750 Ormsby Station Road, Ste. 205
Louisville, KY 40223
Contact: Stephen Tweed
Phone: (502) 339-0653
Website: www.leadinghomecare.com
Home care consultants.

Legal Shield

800 S. 4th Street
Louisville, KY 40203
Phone: (502) 609-1928
Website: www.legalshield.com

Logan's Linens

1240 Harry Long Road
Shelbyville, KY 40065
Contact: Dave Blanford
Phone: (502) 633-0298
Website: www.loganslinens.com
Offers linen and uniform rental services to the healthcare industry.

MDOfficeManager, LLC

1410 South Clark Blvd., Suite 2100
Clarksville, IN 47129
Contact: Suhas Gandhi
Phone: (812) 248-9206

Medical Resources Group

Louisville, KY
Contact: Trae Christian
Phone: (502) 523-0636

Website: www.rxmrg.com

The Medical Resources Group is a trusted resource for members of the healthcare community.

Medical Software Associates

1021 McCallie Avenue
Chattanooga, TN 37403
Contact: Mike Miller
Phone: (502) 724-0141
Website: www.medicalsoftwareinc.com

MJ Scrubs & Medical Supplies, LLC
115 Brentlawn Road
Frankfort, KY 40601
Contact: Rick James

Myliance

1868 Campus Place
Contact: Brian Byrne
Phone: (502) 640-1669
Website: www.myliance.com
Myliance resident care at home extends far beyond the traditional healthcare model and delivers care to your doorstep.

Office Environment Company

1136 W. Market Street
Louisville, KY 40203
Contact: Christina Elder, Business Development
Phone: (502) 585-5161
Website: www.oecoffice.com
Family-owned and operated since 1907, and we know the value of building long-term relationships and backed by the resources of Haworth, a global leader in design & manufacture of adaptable workspaces.

ORI – Office Resources, Inc.

816 E. Broadway
Louisville, KY 40204
Contact: George Bell, President/CEO
Phone: (502) 589-8400
Website: www.oriusa.com

Parkinson Partners, LLC

8300 Jenny Lind Drive
Louisville, KY 40219
Contact: Katherine Autin
Phone: (502) 314-8307
Website: www.parkinsonpartners.com

RecoverCare

1920 Stanley Gault Parkway, Ste. 100
Louisville, KY 40223
Contact: Mary Zappone, President/CEO
Phone: (502) 489-9449
Website: www.recovercare.com
A leading provider of therapeutic support surfaces, bariatric care equipment, negative pressure wound therapy systems, and safe patient handling solutions.

Roundtree & Associates
2525 Nelson Miller Parkway, Ste. 106
Louisville, KY 40223
Contact: Colleen Thomas
Phone: (502) 244-5835
Website: www.ashleyroundtree.com

Sodexo Health Care
8221 Nottingham Parkway
Louisville, KY 40222
Contact: Kurt Hayden
Phone: (502) 744-5039
Website: www.sodexousa.com
Food and Facilities Management Service.

Superior Van & Mobility

4734 Rockford Plaza
Louisville, KY 40216
Contact: Sam Cook, Managing Member/President
Phone: (502) 410-1901
Website: www.superiorvan.com

Supplies Over Seas

1500 Arlington Avenue
Louisville, KY 40206
Contact: Kevin Orr, President/CEO
Phone: (502) 736-6360
Website: www.suppliesoverseas.org
A Louisville, Kentucky-based nonprofit organization that meets critical health care needs in medically impoverished communities around the world by collecting and distributing surplus medical supplies and equipment.

Treadmill Medic
3215 College Drive
Louisville, KY 40299
Contact: Tim Hartlage
Phone: (502) 454-6442
Website: treadmillmedic.com
Provides nationwide service, repair, assembly, and installation for commercial and residential exercise, fitness, and medical equipment.

Unified Technologies

9822 Bluegrass Pkwy.
Louisville, KY 40299
Contact: Michael Gabhart
Phone: (502) 459-9141
Website: www.unified-team.com

Universal Linen Service

1807 Commerce Road
Louisville, KY 40208
Contact: Tom Austin, President
Phone: (502) 635-1507
Website: www.universallinen.com

Utterly Organized Memory Movers

9608 Moorfield Circle
Louisville, KY 40241
Contact: Tracie Utter, Owner
Phone: (502) 291-6890
Website: www.memorymovers.net



Vantiv

7200 Industrial Road
Florence, KY 41042
Contact: Edward Kenney, Senior Consultant
Phone: (919) 259-8601
Website: www.vantiv.com



Workshop, the creative workplace

1205 E. Washington Street, Ste. 101
Louisville, KY 40206
Contact: Stephanie Ringer, Chief Fun Officer/Owner
Phone: (502) 583-8555
Website: www.creativeworkplace.com



XBE, Inc.

2119 Frankfort Avenue
Louisville, KY 40206
Contact: Jesse Work
Phone: (502) 899-1969
Website: www.xbeinc.com



ZirMed

888 W. Market Street
Louisville, KY 40202
Contact: Jim Lacy, Corporate Secretary, CFO
Phone: (502) 473-7709
Website: www.zirmed.com
Revenue cycle management



Don't forget to check out other HEN publications!

Health Enterprises Network Promotes Healthcare Cluster

Healthcare employs nearly one in six metro Louisville workers, more than any other category. This key business cluster includes insurance companies, hospitals, provider groups, health-related information technology, health management and prevention, medical device manufacturers, wellness, elder care, and professional specialty service providers. To provide focused support for on-going growth and economic development, the leaders of Louisville's health-related economy created Health Enterprises Network.

HEN's regional mission is to champion expansion of the health-related economy and Louisville Metro's recognition as a global center of excellence for health business, research, education and innovation.

Louisville is the third largest metro in the United States with a population of 1.25 million and a labor force of over 643,000. It generated \$54.4 billion in commerce in 2012 with a per capita GDP of \$43,500. National per capita real GDP averages \$45,684. Louisville recently economy lost more than 58,000 jobs between June 2007 and February 2010 as a result of the Great Recession, but in the four year period since has recovered all those losses and added another 57,000 jobs.

The metro's largest employer is United Parcel Service, and Louisville is home to international insurance companies including United Brands, Papa John's, and Trans

Roadhouse. However, it is Louisville's 10 largest individual employers are in of the healthcare sector, whose leading member is Humana. Norton Healthcare and KentuckyOne Health are top five employers also.

Manufacturing is the second largest industry by employment in the region with nearly 12 percent. Growth is driven by the auto industry, specifically Ford and Toyota vehicle assembly plants, as well as appliance manufacturing expansion by General Electric.

Louisville metro has nearly 3,900 health-related establishments, making up about 15 percent of all businesses. Collectively, they employ over 190,000 persons with an annual payroll totaling \$3.8 billion. All major components of Louisville's healthcare industry have posted growth since 2006.

Figure 1: Average Annual Pay per Job by Industry Louisville MSA, 2012

Figure 2: Paid Employees by Industry, Louisville MSA, 2012

Figure 3: Average annual pay in the Health Care and Social Assistance category locally is \$40,295. Construction (\$46,321) and Real Estate (\$39,454) provide similar average compensation.

The three highest paying sectors are:

- Management of Companies & Enterprises (\$100,181)
- Finance & Insurance (\$65,348) and
- Mining (\$53,939).

Figure 4: Paid Employees by Industry, Louisville MSA, 2012

Louisville Healthcare Follows. From left: Kevin Rapp, vice president, strategy and business development, WellSource; Stuart Williams, division chief, Biotech Heart, Noto Region, senior financial analyst, Kindred Healthcare; Brian Brownman, attorney, Hall Render; John Jennings, assistant vice president of medical operations and chief technology officer, Vivid Video Communications; Jeff Kober, vice president, CBOE Insurance Services Inc.; Jennifer Thomas, insurance senior manager, Mounting Chilton Mueley; Kara Sedaris, instructor, James Graham Brown Cancer Center; University of Louisville; Tony Wright, business development director, Koby Construction; Michael P. Muldon, executive director, Health Enterprises Network; Tony Miranda, senior vice president and chief compliance officer, Elanco Senior Living; and Laramie A. Gray Jr., executive and medical director, Cardiovascular Innovation Institute (CII).

Figure 5: The University of Louisville had 123 grants from the National Institutes of Health totaling over \$47 million in 2013. Grant numbers were the best UofL dropped in nationwide NIH rankings from 76 in 2004 to 83 in 2013. In comparison, the University of Kentucky has 231 grants totaling over \$77 million and ranks 53rd.

Figure 6: Number of SBIR-STTR Awards Granted, 2013

Figure 7: Health Care and Social Assistance Industry Per Capita Revenue, 2007

Figure 8: Louisville metro ranks above the national average in health care and social assistance revenue with \$6,210 per capita and near the cost of competition metros where per capita healthcare revenues are near \$4,700 to \$7,400.

Figure 9: Revenue is increasing in three sectors: Ambulatory Care, General Medical Surgical Hospitals, and Nursing & Residential Care Facilities. Louisville metro ranks near the top among the comparison metros for Nursing & Residential Care Facilities and in the middle for Hospital and Ambulatory Care.

2014 Year In Review

HealthEnterprisesNetwork

Based in Louisville

Health Enterprises Network (HEN) is a healthcare network for business development, leadership, and education, serving 1250 members and nearly 200 organizations throughout Kentucky and Southern Indiana. HEN is the most advanced healthcare network in this region of the United States.

Displayed below is a sample of noteworthy activities:

January

New HEN Board members elected: Joanne Berryman, Spalding University, Mark Wiegand, Professor & Dean, Lansing School, Bellarmine University, John Reinhart, CEO, InnovateLTC and Shelley Neal, VP, Ambulatory Services, KentuckyOne Health

New HEN Executive Committee members elected: Chair, Joe Steier, Signature HealthCARE; Immediate Past Chair, Ralph Gronefeld, ResCare; Vice Chair, Knowledge Networking, Mary Jo Bean, Norton Healthcare; Vice Chair, Business Development & Marketing, Janet Lively, TEG Architects; Vice Chair Health Policy, Kathie McDonald-McClure, Wyatt, Tarrant & Combs; Vice Chair Finance, Nick Walker, PwC; Chair, Nominating Committee, Vickie Yates Brown; Greg Aaron, Cisco Systems; Jan Gordon, Spencerian College; Phil Marshall, Hosparus; David Richard, Dean Dorton; Rene Savaris, Hall Render Killian Heath & Lyman; Richard Shaver, UPS; Kent Oyler, GLI

University of Louisville communication student, Ginny Washbush, begins internship